

SPELLMAN

MUSEUM OF STAMPS
AND POSTAL HISTORY

A SEPTEMBER TO REMEMBER!



The Spellman Museum of Stamps and Postal History is starting the "new school year" off in a big way! On the heels of a wonderful "August Adventures" open house on Sunday, August 27, we are delighted to announce a new member of our team. We typically open this monthly outreach with fun and interesting information related to the month just starting, stamps and their relationship to pop culture and life. We thought this news was worthy of our newsletter -- and it's fun, too!

BRIAN J. HOWARD, EXECUTIVE DIRECTOR TO LEAD THE SPELLMAN

The Spellman Museum of Stamps and Postal History is pleased to announce the appointment of Brian Howard as Executive Director effective September 1, 2023. Mr. Howard will assume responsibilities for one of the nation's two private philatelic museums.

Mr. Howard, raised in central New York State, spent most of the last three decades working in the history museum field. Early in his career, he served as a curator at an

aviation museum, and held roles in development near Washington, DC and in New York's southern tier. More recently, he served as Executive Director at the Oneida County (NY) History Center and at the North Andover Historical Society in Massachusetts. Mr. Howard's Massachusetts roots run deep. He is a proud and direct descendant of Thomas Howard, one of the first settlers of Ipswich in 1634, and Jonathan Fairbanks of Dedham, whose c.1641 home stands as the earliest surviving timber frame house in North America. He earned his master's degree in Museum Science from Texas Tech University in 1994.

Brian, shown above, at the gravesite of William Howard 1635-1709. You can welcome Brian to the area and to our stamp world by contacting him bhoward@spellmanmuseum.org. He'd love to hear from you!

September - a summer ender!

Labor Day weekend acts as the "new year" for so many. School starts, daylight reduces, air begins to chill - all signs that the year is progressing. But we love the layers, the subtle then swift turning of the leaves, the mums and pumpkins, and eventually, the holly and evergreens. The year is dependable - we know what to expect yet it is always wonderful!



BACK TO SCHOOL
**"EDUCATION IS THE MOST POWERFUL WEAPON YOU CAN USE
TO CHANGE THE WORLD" -- Nelson Mandela**



Now - onto the month of September. **New USPS Issue:**

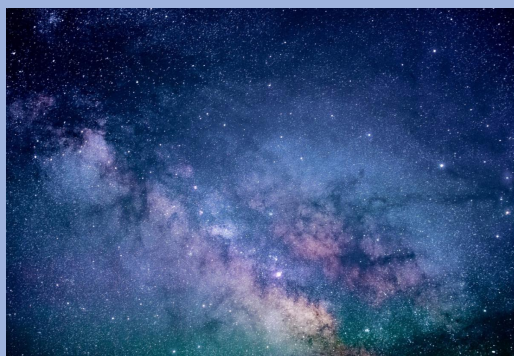
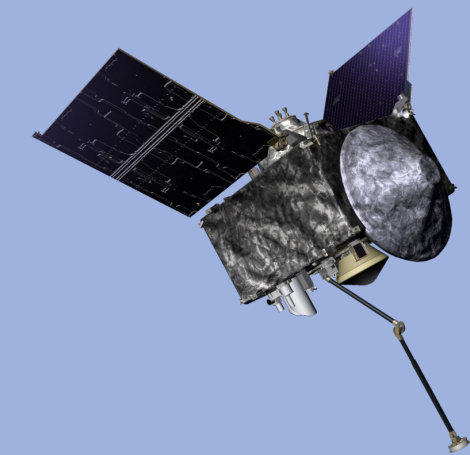
To commemorate NASA's OSIRIS-REx spacecraft and the samples of the asteroid Bennu (shown below left) that it will deliver to Earth in September 2023, the USPS will issue this stamp on September 22. This new 20-stamp pane celebrates NASA's seven-year OSIRIS-REx mission to study and map the asteroid Bennu and return a sample of the surface to Earth in September 2023. This is the first pristine sample of an asteroid collected by the United States, and it will help scientists learn how our solar system formed.

The stamp artwork shows the capsule containing the sample parachuting to the Utah Test and Training Range, a U.S. Department of Defense facility in the desert. A depiction of Bennu's surface appears at the bottom of the pane's selvage with outer space above — deep blue and dappled with celestial bodies. A view of the asteroid is in the upper right corner.

OSIRIS-REx left Earth aboard a rocket launched from Cape Canaveral, FL, on Sept. 8, 2016, then orbited the sun for a year before passing close to Earth for a gravity assist. The spacecraft arrived in the asteroid's vicinity in December 2018 and got to work. With its special cameras and spectrometers, it began photographing and mapping Bennu's surface to determine the best site from which to collect samples.

The time for the rendezvous arrived in October 2020. To carry out its task, the spacecraft did not actually land on the asteroid but instead slowly descended toward the surface and extended a robotic arm. A collection device at the hand-end of the arm then released a sudden puff of nitrogen gas that sent up a cloud of dust and rocks from Bennu's surface. More than 2 ounces of these materials were captured in a special container in the collection device, which then closed and retracted into the spacecraft. On May 10, 2021, OSIRIS-REx began its flight back toward Earth. Its container of asteroid dust and rocks, enclosed in a special capsule, will parachute to the Utah desert on Sept. 24, 2023.

Alan Dingman illustrated the stamp and pane, basing his work on images supplied by NASA. Antonio Alcalá, an art director for USPS, designed the stamp and pane.



September is the month of:

American Chess Day - go on, its your move!

Bring Your Manners To Work Day - please?

Cherry Popover Day - i prefer apple

Crazy College Colors Day - every day!

Cat Appreciation Day - purrrrrfect

National Lazy Mom’s Day - put your feet up, finally!
No Rhyme Nor Reason Day - this or that?!
Pink Cadillac Day - should be every day
World Letter Writing Day - is definitely every day at the Spellman
Blood Cancer Awareness Month - wait, this is serious!

FOOTBALL SEASON BEGINS IN SEPTEMBER!

But how did professional football get started in the first place?

On September 20, 1920, ten football teams gathered in Canton, Ohio to create the American Professional Football Association (APFA), now known as the National Football League (NFL). Four more teams joined the League later that year, rounding out the 14 Original NFL Towns.
The 5 original teams, in this order, were:

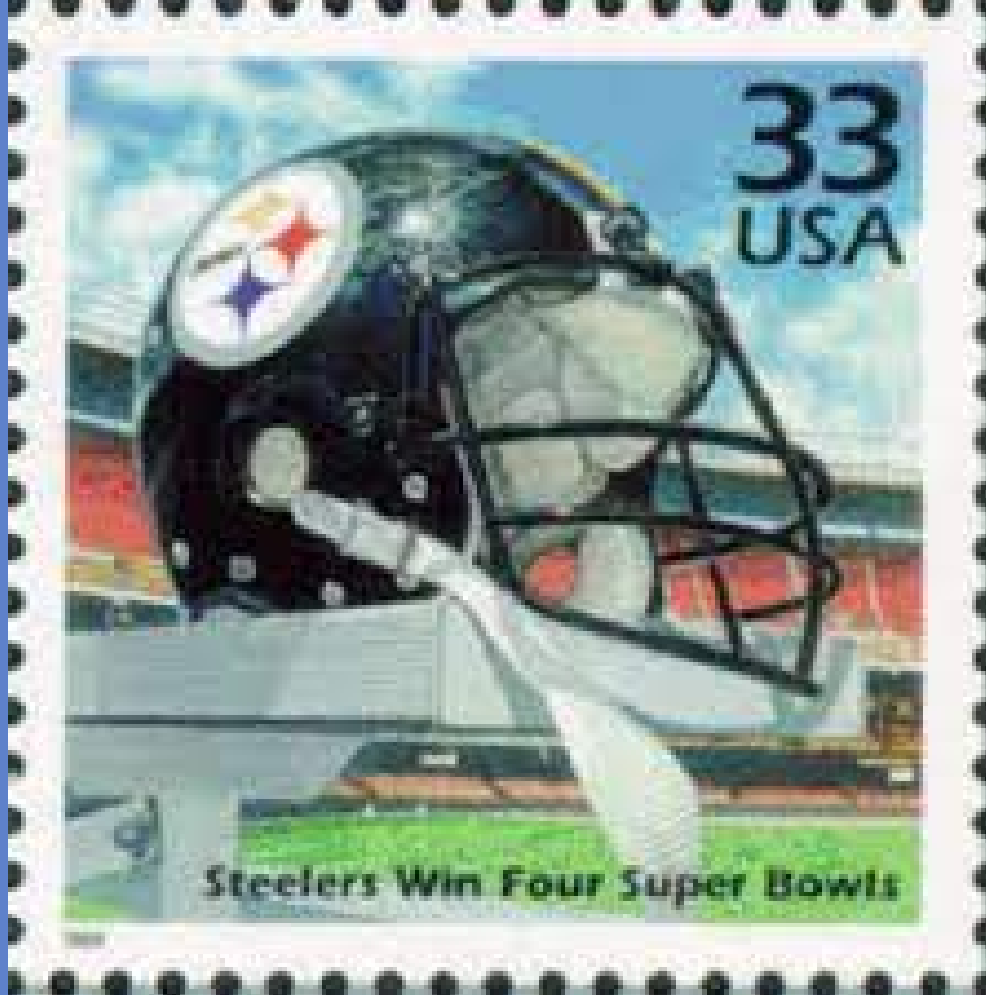
**Arizona Cardinals Chicago Bears Green Bay Packers
New York Giants Detroit Lions**

The Houston Texans are the youngest franchise in the NFL, becoming the league's 32nd franchise during the 2002 season
Who is your favorite team and why? Let us know!

We all know the football season concludes with the Super Bowl, featuring expensive and memorable commercials, wildly ambitious and often pyrotechnic half-time shows and, oh, a football game in between.
The top ten foods eaten during the Super Bowl:

According to the report, America's top 10 Super Bowl party foods were:
Meatballs. Guacamole. Chips and salsa. Tater tots.
Chili. Buffalo wings. Hummus. Nachos.





Who Was Pop Warner?

Glenn Scobey Warner (April 5, 1871 – September 7, 1954), most commonly known as Pop Warner, was an American college football coach at various institutions who is responsible for several key aspects of the modern game. Included among his innovations are the single and double wing formations (precursors of the modern spread and shotgun formations), the three point stance and the body blocking technique. Fellow pioneer coach Amos Alonzo Stagg called Warner "one of the excellent creators". He was inducted as a coach into the College Football Hall of Fame as part of its inaugural class in 1951. He also contributed to a junior football program which became known as Pop Warner Little Scholars, a popular youth American football organization.

Lesser known about Pop Warner - he married the former Tibb Lorraine Smith in Springville on June 1, 1899. He smoked Turkish Trophy cigarettes and drank alcohol; his trainers were instructed to supply him with "cough medicine" during practice and games. Warner always enjoyed painting in watercolors. According to an art exhibition review in *The Stanford Daily*, Warner relied on painting to put him through law school at Cornell. He also had a woodworking shop in his garage.



NEED SOME ASSISTANCE WITH TEACHING?
**WE CAN HELP! CONTACT US FOR TEACHING
TOOLS, CONTENT AND HOW STAMPS CAN BE
GREAT LEARNING AIDS!**

ARE YOU A MEMBER OF THE SEPTEMBER BIRTHDAY SQUAD?

- September 1, 1908 – Estee Lauder
- September 1, 1946 – Barry Gibb
- September 1, 1957 – Gloria Estefan
- September 2, 1948 – Terry Bradshaw
- September 2, 1948 – Christa McAuliffe
- September 2, 1964 – Keanu Reeves
- September 2, 1968 – Salma Hayek
- September 3, 1965 – Charlie Sheen
- September 4, 1981 – Beyonce Knowles
- September 5, 1940 – Raquel Welch, actress
- September 6, 1888 – Joseph P. Kennedy
- September 7, 1908 – Michael DeBakey, pioneer heart surgeon
- September 7, 1936 – Buddy Holly
- September 9, 1941 – Otis Redding
- September 9, 1949 – Joe Theisman
- September 9, 1960 – Hugh Grant
- September 9, 1966 – Adam Sandler
- September 11, 1913 – Paul “Bear” Bryant, football coach
- September 11, 1924 – Tom Landry, NFL Dallas Cowboys coach
- September 13, 1851 – Walter Reed
- September 14, 1956 – Joe Penny
- September 15, 1890 – Agatha Christie
- September 15, 1946 – Tommy Lee Jones
- September 15, 1984 – Prince Harry
- September 16, 1956 – David Copperfield
- September 18, 1905 – Greta Garbo
- September 18, 1971 – Lance Armstrong
- September 20, 1934 – Sophia Loren (see below)**
- September 23, 1949 – Bruce Springsteen
- September 24, 1941 – Linda McCartney
- September 25, 1944 – Michael Douglas
- September 25, 1952 – Christopher Reeve
- September 26, 1898 – George Gershwin
- September 26, 1914 – Jack LaLanne
- September 26, 1981 – Serena Williams
- September 28, 1901 – Ed Sullivan
- September 30, 1924 – Truman Capote



Sofia Costanza Brigida Villani Scicolone Knight Grand Cross OMRI, known professionally as Sophia Loren, is an Italian actress. She was named by the American Film Institute as one of the greatest stars of classical Hollywood cinema



She made history in 1961 as the first performer to win an Academy Award for a foreign-language role with *Two Women*, in which



and as of 2023, is one of the last surviving major stars from the era.

she stars as a strong-willed mother who braves an assault to save her daughter.



What can we do for you? Is there a certain topical or specific stamp you'd like to learn more about? Let us know!

September Gemstone: Sapphire
September Flower: Astor

It is always good to be a leader!
But be a follower! Find us on Instagram
Spellman Stamp Museum

Do You Know Our Accession Partner?
We partner with NobleSpirit, a firm specializing in rare stamps, coins, paper money, books, antiques, and collectibles.
NobleSpirit is our 2023 Events sponsor and a trusted and reliable resource.



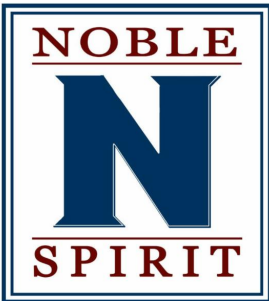
*We are a fun
(and funny at times)
stamp museum!
We like that you like us.*

*We are open thursdays,
through sundays right
after labor day.
Love our newsletter?
Share it with a friend!*



Power of culture

Spellman educational programs are supported in part by a grant from the Weston Cultural Council, a local agency which is supported by the Mass Cultural Council. The Spellman is grateful for all forms of support, both financial and via collections.



Specializing in stamps,
antiques, books, and
collectibles.

The Spellman
Museum of Stamps
and Postal History
Official Events Sponsor

WHY STAMPS? WHY THE SPELLMAN?

ITS EASY – WE ARE FUN! AND WE ARE A WEALTH OF INFORMATION.
STAMPS ARE TINY PIECES OF BEAUTIFUL ARTWORK THAT ENGAGE AND
INSPIRE SO MANY PEOPLE.

WE ARE FASCINATED BY THE PLEASURE THESE TINY ADHESIVES PROVIDE TO
COLLECTORS OF ALL AGES.

WHAT IS YOUR FAVORITE STAMPS AND WHY?
SEND US A NOTE AND LET US KNOW – WE WANT TO TELL YOUR STORY!

Fall is a perfect time to volunteer.
Enjoy 20% Discount on All Museum Purchases

Are you interested and available to help us by volunteering?
Work alongside our knowledgeable and devoted curator!
If you are versed in and interested in the following,
please contact us to set up a time to discuss volunteering:

- Worldwide Postal Stationary, Ship cancels, Railway POs
- Highway POs, Worldwide and US used postal stationary and postal history including auxiliary markings, DPOs, errors and earliest use dates.
- Postcards as postcards not just postal history.
- Worldwide fiscal stamps and perfins
- Topical collections: maps, music, scouts. olympics, women, space, medicine, black history.
- Israeli collections



LET'S KEEP IN TOUCH!

The Spellman Museum is a treasured resource, locally and nationally, and beyond!

As a 501(c)3 support-driven entity, we appreciate all forms of support.

If you have a collection to be evaluated, feel free to call or [email Joseph Mullin](#), Public Affairs Director, to arrange the visit. He can be reached at 781-768-8367.

If you'd like to support the museum with a

YOUTH AND SENIOR MEMBERSHIPS ARE MORE AND MORE POPULAR!

The Museum continues to offer a complimentary, one-year membership for children. Youth members receive a monthly packet of topical stamps, worksheets and philatelic information, a discount in the Museum store, a monthly stamp calendar plus free admission for themselves and the family. For more information, contact [Jessica Leuschner](#).

donation, please visit spellmanmuseum.org

If you'd like to visit the Museum, simply stop by Thursdays - Sundays, noon - 5pm. Or, feel free to call to schedule a private tour.

We joyfully welcome all!
Plus we are really fun!

781-768-8367

Our seniors are a treasured segment of our membership. Established last year, this \$25 membership offers those individuals all of the benefits and joys of membership. Contact us for more information!

Have ideas? Want to share?
Please send us any and all ideas!

Spellman Museum of Stamps and Postal History | 241 Wellesley St, Weston, MA 02493

[Unsubscribe](#) bhoward@spellmanmuseum.org

[Update Profile](#) | [Constant Contact Data Notice](#)

Sent by jlchase@spellmanmuseum.org powered by



Try email marketing for free today!