

SPELLMAN

MUSEUM OF STAMPS
AND POSTAL HISTORY

YOU MAY WANT TO KNOW MORE ABOUT MAY!

May! May we tell you about May?

The dictionary defines the word "may" as expressing possibility, for example, "that may be true." Another definition is "expressing permission," as in "may I ask a few questions?" To our precious Spellman readership - may we ask you a few questions?



Will you read this entire newsletter?

Yes

No

I'm busy - I'll let you know when I finish reading

I like the Spellman more because of this monthly e-news!

Yes

No

Maybe

Did you ever think a Stamp Museum could be so much fun?

Yes

No

I'll let you know when I stop laughing!

MAY IS A TIME OF POSSIBILITY - THE THINGS THAT 'MAY' HAPPEN. HERE ARE SOME DAYS AND FEATURES OF THE FIFTH MONTH OF 2023 -

We didn't know this!: No U.S. president has ever died in the month of May. In every other month of the year, at least one U.S. president has died.

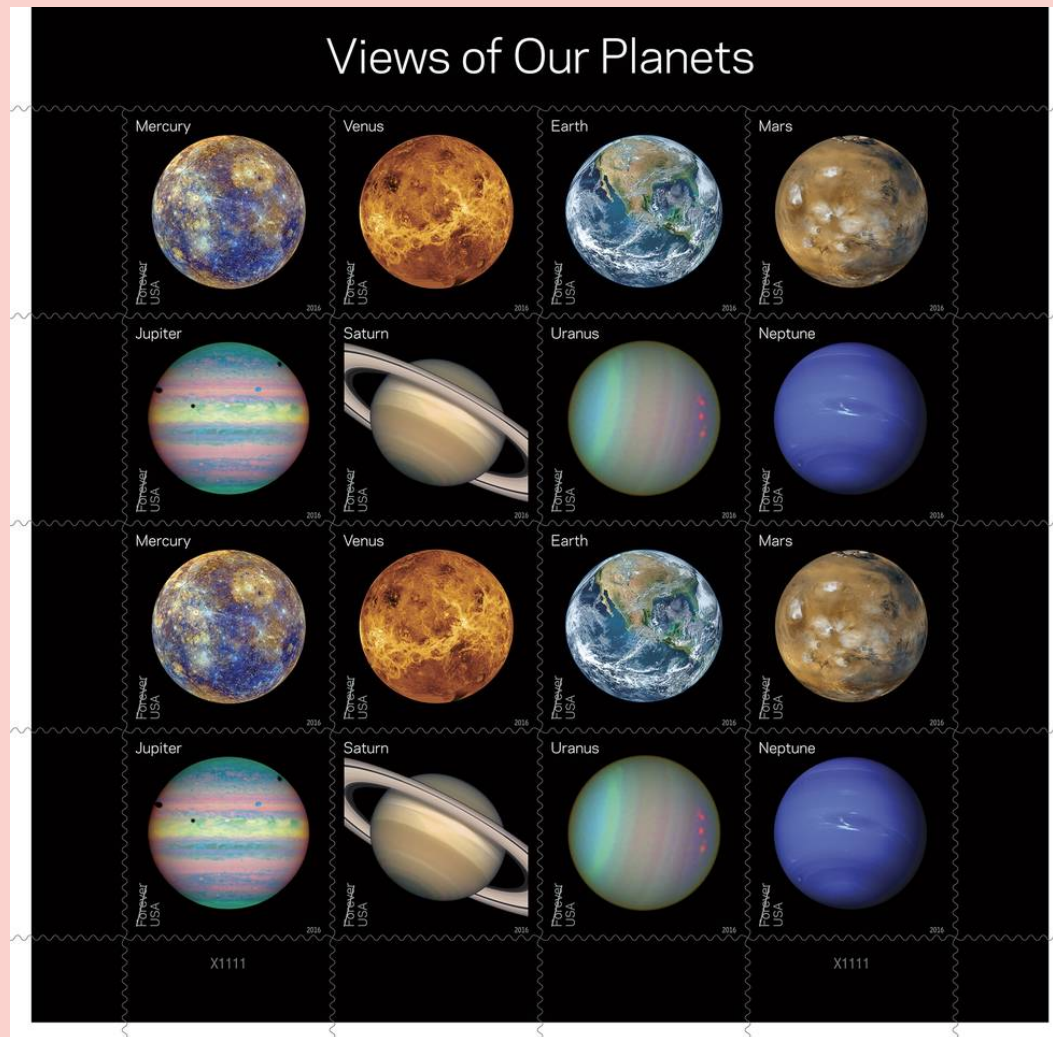
"May"be you knew this: The name May is the modern-day English adaptation of the Latin word Maius, which has origins going back to the time of the ancient Greeks. They named the month of May (or Maius) after the Greek goddess of growth.

April Showers Bring May Meteor Showers: Every year there is a particular meteor shower in May called Eta Aquariids. Discovered in 1870, this meteor shower passes by Earth between April 19 and May 28. It's easiest to view it from the equatorial regions of the world and can be glimpsed passing by just before dawn.

May People Make It!: It is said that those born in May have a greater

chance of being more successful in life and experience more love. While this may not be scientifically factual, it has been noticed that people born in May understand the importance of love and success more than others. **May Day!:** May is pretty exclusive when it comes to days of the week. No other month in one single year starts or finishes on the same weekday as May. Basically, if the first of May is on a Friday, and the 31st of May is on a Sunday, no other months in the year will start or end on a Friday or a Sunday!.

You MAY remember this gorgeous sheet of stamps: "Views of our Planets" Forever stamps featuring iconic images of the planets in our solar system, including the well-known "Blue Marble" image of Earth. New "Pluto Explored" were commemorated in July 2015. This May 31 first-day-of-issue set of stamps were dedicated at a ceremony in New York City at World Stamp Show-NY 2016. This international gathering of stamp collectors occurs only once each decade in the United States, and – with more than 250,000 visitors who attend – is the largest stamp show in the world. And, oh, did you know that the 2026 World Stamp Show will be held here in our very own Boston, Massachusetts? Visit boston2026.org to learn more and find out the key role our special stamp museum will play!



Founded in MAY: Tiny Rhode Island

This "Rhode Island" postage stamp was issued in 1989. Founded May 4, 1776, the state of Rhode Island is barely larger than a postage stamp, but trust us, its small but mighty.

Measuring a mere 48 miles long and 37 miles



wide, is the smallest of the U.S. states. Despite its small area, Rhode Island, known as the "Ocean State," boasts over 400 miles of coastline. Rhode Island was founded by Roger Williams in 1636, who had been banished from the Massachusetts colony for his advocacy of religious tolerance and the separation of church and state. During the colonial period, Newport was a major hub for shipping and trade, and in the 19th century, Rhode Island was at the forefront of the Industrial Revolution and the establishment of power-driven textile mills. Rhode Island hosted the first National Lawn Tennis Championship in 1899, and is home to the Tennis Hall of Fame. Famous Rhode Islanders include novelists Cormac McCarthy and Jhumpa Lahiri, actor James Woods, television personality Meredith Vieira and Civil War U.S. Army officer Ambrose Burnside.

State Capital? Providence

Population: 1,152,567

Size: 1,545 square miles

Nickname(s): Ocean State; Little Rhody;

Plantation State; Smallest State; Land

of Roger Williams; Southern Gateway of

New England

We love our New England neighbor!

We Aren't Through with Rhode Island Just Yet! Small State, Big Impact!

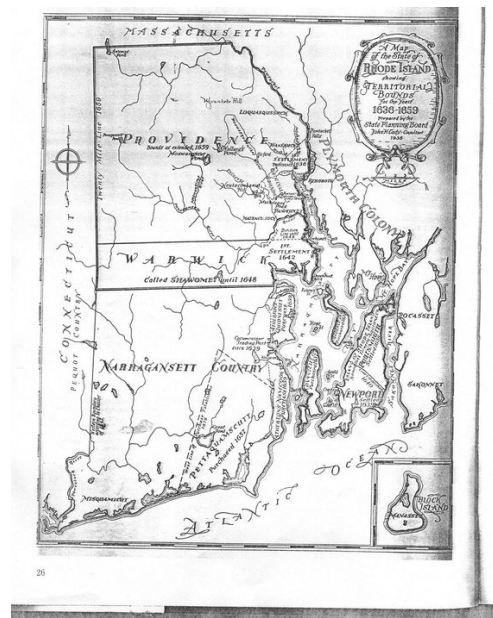
On October 20, 1960, the Post Office Department placed into service a new mail processing facility at Providence, Rhode Island, and widely promoted it as "the first automated post office in the United States."

It incorporated the first automatic, high-speed sorting, facing, and cancelling machines as well as three miles of conveyor belts that moved mail between processing areas within the plant and to the loading docks for transport. This stamp, above right, depicts an architect's rendering of the new facility and was the first US issue that directly celebrated the Post Office Department.

This Idea MAY Be Self Serving

When the idea for a postage stamp publicizing the new facility was presented to the Citizens Stamp Advisory Committee on June 28, 1960, it was unanimously rejected as "obviously self-serving." The committee further predicted that the stamp would be "unpopular because it is promoting automation at a time when unemployment is increasing." Postmaster General Arthur Summerfield authorized the stamp anyway. The success paved the way for future postal themes on stamps.

Unlike existing post office buildings, the Providence, RI building was constructed to fit the new, large machines. The one-floor building design used only two supporting columns, maximizing floor space for the use of mail processing machines.



HOLIDAYS IN MAY! YOU MAY KNOW THEM ALL!

May 1

Global Love Day- Peace on Earth!

May Day

Melanoma Monday - Sunblock now!

National Loyalty Day - I believe in you!

May 2

National Brothers and Sisters Day -

Kiss your precious sib!
National Teacher Appreciation Day -
The most important people in your
early lives

World Tuna Day - With May-O!

May 3

National Anxiety Disorders

Screening Day - Relax!

National Paranormal Day - Did you
see that?

May 4

National Self-Employed Day

Pesach Sheni

Star Wars Day - May the Force

Be With You

May 5

Cinco de Mayo - Celebrate!

May 6

International No Diet Day

Join Hands Day

Kentucky Derby

National Fitness Day - Same day as

"No Diet Day"??

National Nurses Day - They Do It All!

May 7

National Lemonade Day -

Make It From Lemons!

World Laughter Day - Should be

Every Day!

May 8

National Student Nurse Day -

Soon They Will Do It All

Time of Remembrance and

Reconciliation for Those Who Lost

Their Lives During WWII -

Never Forget!

May 9

National Lost Sock Memorial Day -

This is Clearly Every Day!

May 11

National Eat What You Want Day -

Wait, What about May 6??

May 12

International Nurses Day - They Do
it All, All Over the World

National Military Spouse

Appreciation Day - Thank You Both

For Your Service

National Crouton Day

National Frog Jumping Day - Ribbit!

May 14

Mother's Day - Treasure Yours!

May 15

Bring Flowers to Someone Day -

Should Be Every Day

May 16

Drawing Day - Every Day for Us!

National Barbecue Day - Well Done!

May 18

International Museum Day -

Come Visit!

May 19

National Endangered Species Day -

Love a DoDo Bird!

May 21

International Tea Day

World Day for Cultural Diversity for

Dialogue and Development

World Meditation Day - Ohmmm

May 22

International Being You Day -

Go For It - You Do You!

National Solitaire Day - Go Solo!

May 24

National Brother's Day - Should be

Every Day!

National Scavenger Hunt Day -

I Found It!

May 25

National Wine Day - Starts at

Wine O'Clock

May 26

National Road Trip Day

National Sorry Day - I Apologize!

May 27

National Sunscreen Day

Nothing to Fear Day

May 28



Indianapolis 500
 National Brisket Day
 National Burger Day

May 29

Memorial Day
 National Paperclip Day -
 Personal Favorite of Ours!

May 30

International Hug Your Cat Day - If
 You Can Catch Them!
 World Multiple Sclerosis Day

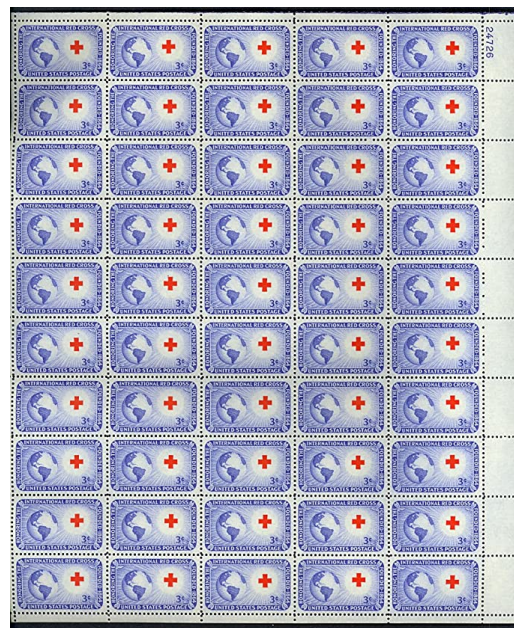
May 31

National Save Your Hearing Day -
 What?

National Senior Health and
 Fitness Day - Go For a Walk!

National Smile Day - You Can Make
 Someone Else Smile with Yours!

World No Tobacco Day -
 Please Don't Smoke!



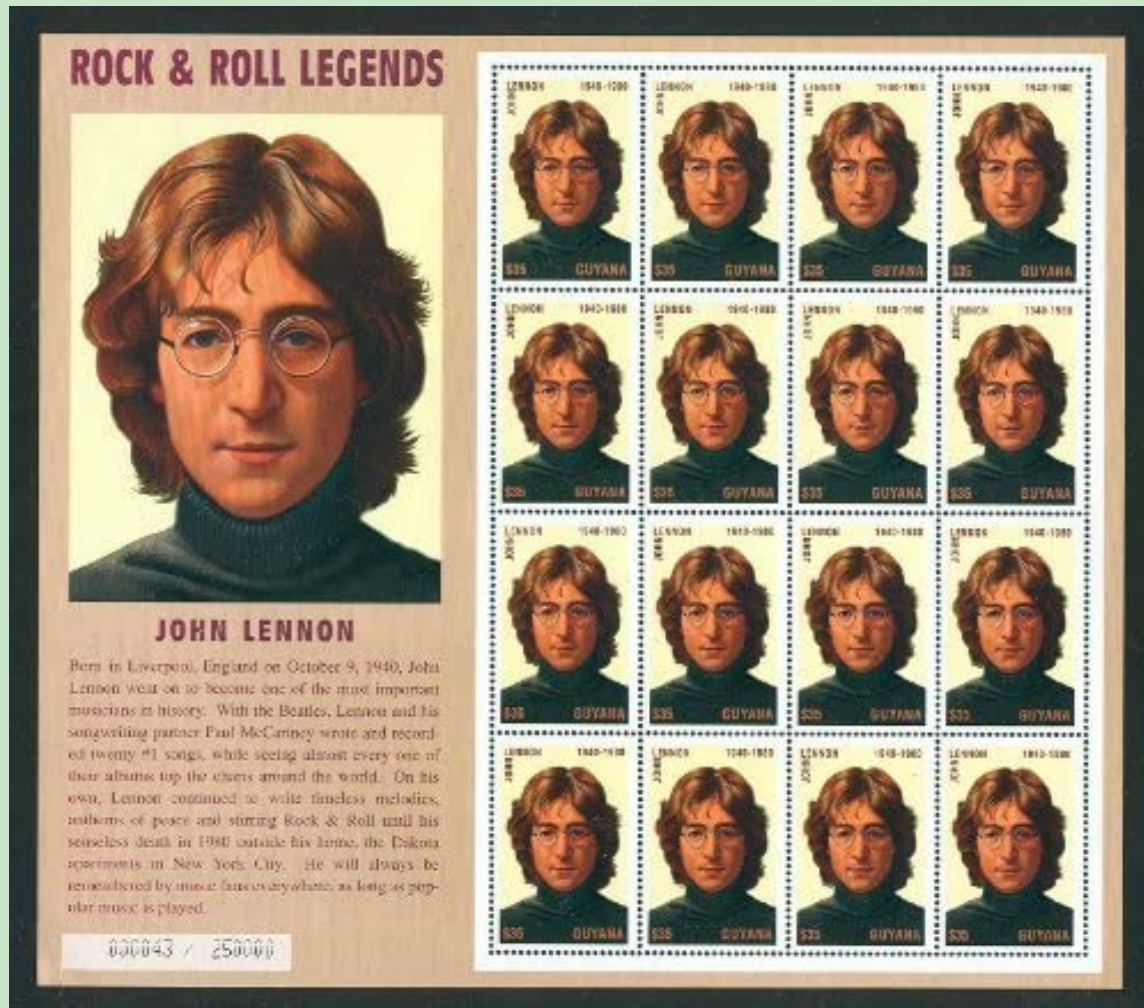
THE RED CROSS:

The American Red Cross, also known as the American National Red Cross, is a non-profit humanitarian organization that provides emergency assistance, disaster relief, and disaster preparedness education in the United States. It is the designated US affiliate of the International Federation of Red Cross and Red Crescent Societies and the United States movement to the International Red Cross and Red Crescent Movement.



WHEN I THINK OF THE SPELLMAN, I THINK....
EMAIL US AND TELL US WHAT YOU THINK!

Below: A Spellman Favorite Stamp - John Lennon was born on October 9, 1940.



MAYbe You Were Born in May?

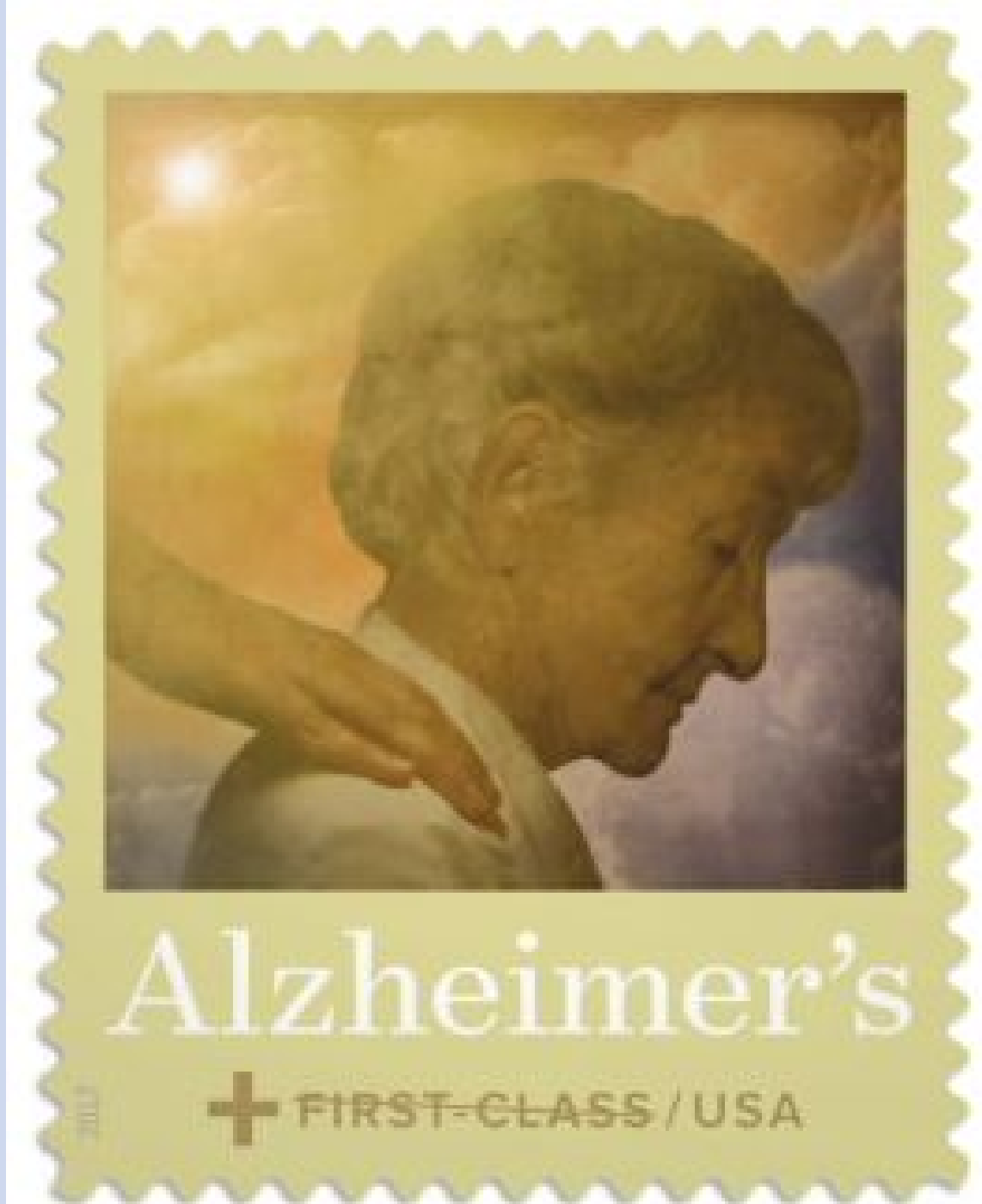
If you were born in the month of May, you are likely described as optimistic and lucky. Taureans, or those born between May 1 and 20, are said to be smart, ambitious and trustworthy. May babies born after May 21 are Geminis, who are said to be more passionate and dynamic.

It's fitting, because that flower is also known as the May lily.

When is your birthday? [Let us know and we'll send you a fun mailing!](#)

And, speaking of getting older, say hello to an elder - these are precious people!





*April Gemstone: Emerald
April Flower: Lily of the Valley*

It is always good to be a leader!
But be a follower! Find us on Instagram
Spellman_Stamp_Museum

Do You Know Our Accession Partner?

We partner with NobleSpirit, a firm specializing in rare stamps, coins, paper money, books, antiques, and collectibles. NobleSpirit is our 2023 Events sponsor and a trusted and reliable resource.

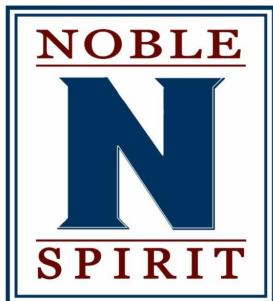
***Other Cool Information
You MAY Not Know:
A Song with "MAY"
in its title:
"First of May"
by the Bee Gees***

Before the Bee Gees became international superstars by reinventing themselves as major players in the disco era, they could croon with the best of them in the 1960s. From 1969, "First of May" is another splendid showcase of Barry Gibb's vocals. According to Tales from the Brothers Gibb, the title is the birthday of Gibb's dog at the time. It was a top-40 hit for the Bee Gees in the United States and reached No. 6 on the UK Singles chart.

***And for the end
of the year:
December, 1963
(Oh, What a Night)"
by the Four Seasons***

A No.1 hit for the legendary group in both the United Kingdom and United States, upon its release in 1975. The tune was written by keyboardist Bob Gaudio and his wife, Judy Parker. According to Four Seasons lore, it was about Gaudio's initial attraction to Parker, presumably back in the early 1960s. The song also noted for Four Seasons drummer Gerry Polci singing lead, and regular, more famous, vocalist Frankie Valli mostly singing backup.





Specializing in stamps, antiques, books, and collectibles.

The Spellman Museum of Stamps and Postal History Official Events Sponsor



Power of culture

Spellman educational programs are supported in part by a grant from the Weston Cultural Council, a local agency which is supported by the Mass Cultural Council. The Spellman is grateful for all forms of support, both financial and via collections.

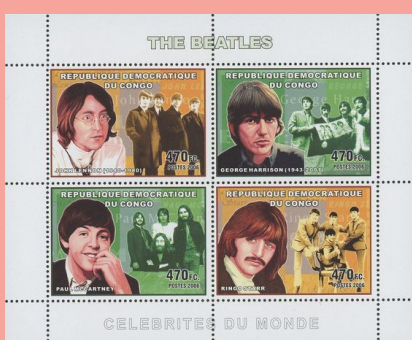
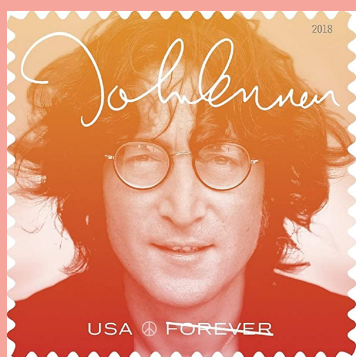
WHY STAMPS? WHY THE SPELLMAN?

ITS EASY – WE ARE FUN!
STAMPS ARE TINY PIECES OF BEAUTIFUL ARTWORK THAT ENGAGE AND INSPIRE SO MANY PEOPLE.

WE ARE FASCINATED BY THE PLEASURE THESE TINY ADHESIVES PROVIDE TO COLLECTORS OF ALL AGES.

WHAT IS YOUR FAVORITE STAMPS AND WHY?
SEND US A NOTE AND LET US KNOW – WE WANT TO TELL YOUR STORY!

We love the Beatles!



What about the Bee Gees? They have been featured on stamps worldwide.

STAMP COLLECTING IS EXCITING! INTERESTED IN JOINING A STAMP CLUB?

Would you be interested in meeting other stamp collectors? Do you want to share your collection with

other philatelists and even sell and buy some stamps? Did you collect when you were young and have now retired and thinking of starting up collecting again? Here are a few of our favorites:

The Waltham Stamp Club meets twice a month in the evenings at the Spellman Museum.

The Greater Boston Philatelic Society meets on the fourth Wednesday of each month at 7:00 pm. All meetings are also available virtually on Zoom.

The Walnut Street Center
291 MYSTIC AVENUE
MEDFORD, MA 02155

at 7pm EST on the 4th Wednesday of the month.

For a zoom invite please email us at:

information@thegbps.com

The Samuel Osgood Club meets twice a month in the evenings in North Andover. Contact Mike Rivet at 978-474-4674 or [by email](#).

Cape Cod Area Philatelic Group meets on the second Thursday of each month at 6:30 pm. Meetings are held at the Yarmouth Fire Station #2 Meeting Room, 340 Main Street (Rte 6A), Yarmouth Port, MA, 02675 for more information, please contact [Lou Giorgetti](#). Visit www.sefsc.org/cape-cod.html for even more information.

Newburyport Stamp Club meets at 1:30 pm on the second and fourth Wednesday of each month at the Newburyport Community Center in the Council on Aging section, 331 High St., Newburyport, MA 01950.

Sudbury Stamp Club meets on the second Monday of each month and is eager to welcome new philatelists. Call Sharon K. Wilkes, Program Coordinator, Sudbury Senior Center at 978-443-3055 to join.

Winthrop Stamp Club generally meets twice a month on the second and fourth Thursdays beginning at 1:00 p.m. and ending by 3:30 p.m. at the Georgetown Senior Community Center, 51 North Street, Georgetown, MA. Contact Richard L. Johnson, President 978-664-2996.

LET'S KEEP IN TOUCH!

The Spellman Museum is a treasured resource, locally and nationally, and beyond!

As a 501(c)3 support-driven entity, we appreciate all forms of support.

If you have a collection to be evaluated, feel free to call or [email Joseph Mullin](#), Public Affairs Director, to arrange the visit. He can be reached at 781-768-8367.

If you'd like to support the museum with a donation, please visit spellmanmuseum.org

If you'd like to visit the Museum, simply stop by Thursdays - Sundays, noon - 5pm. Or, feel free to call to schedule a private tour.

**We joyfully welcome all!
Plus we are really fun!**

781-768-8367

YOUTH AND SENIOR MEMBERSHIPS ARE MORE AND MORE POPULAR!

The Museum continues to offer a complimentary, one-year membership for children. Youth members receive a monthly packet of topical stamps, worksheets and philatelic information, a discount in the Museum store, a monthly stamp calendar plus free admission for themselves and the family. For more information, contact [Jessica Leuschner](#).

Our seniors are a treasured segment of our membership. Established last year, this \$25 membership offers those individuals all of the benefits and joys of membership. [Contact us for more information!](#)

*Have ideas? Want to share?
[Please send us any and all ideas!](#)*

Spellman Museum of Stamps and Postal History | 241 Wellesley St, Weston, MA 02493

[Unsubscribe bhoward@spellmanmuseum.org](mailto:bhoward@spellmanmuseum.org)

[Update Profile](#) | [Constant Contact Data Notice](#)

Sent by bjlchase@spellmanmuseum.org powered by



Try email marketing for free today!