

# SPELLMAN

MUSEUM OF STAMPS  
AND POSTAL HISTORY

## MONTH 3 - WHEEEE! MARCHING INTO MARCH 2023!



Before you begin your celebrations of the not-so-well-known March holidays such as International Rescue Cat Day, National Banana Cream Pie Day, National Read Across America Day, and World Teen Mental Wellness Day, we want to spend a few moments on the well-known days in March we recognize.

Saint Patrick's Day, or the Feast of Saint Patrick, is a cultural and religious celebration held on March

17, the traditional death date of Saint Patrick, the foremost patron saint of Ireland. We are known to wear green to recognize this day each year. What if we don't wear green? You may get pinched if you wear another color - lore has it that leprechauns like to pinch people, and green is invisible to leprechauns. Let us know! The holiday has evolved into a celebration of Irish culture with parades, special foods, music, dancing, drinking and a whole lot of green. And, there is much talk of "the luck of the Irish!"

### Feeling lucky?

**Luck is the phenomenon and belief that defines the experience of improbable events, especially improbably positive or negative ones.**

Luck of the Irish - Some believe the phrase means that those who are Irish are inherently lucky and that the Irish tend to be able to land on their feet when unfortunate circumstances take place. The Irish in general are very strong willed and resilient due to their country's struggles and tragic history.



roll the dice!

Eire is Irish for "Ireland", the name of both an island in the North Atlantic and the sovereign state of the Republic of Ireland which governs 84% of the island's landmass. The modern Irish Éire evolved from the Old Irish word Ériu, which was the name of Ireland and of Gaelic goddess. Ériu



is generally believed to have been the matron goddess of Ireland, a goddess of sovereignty, or simply a goddess of the land



## POSTAGE STAMPS OF IRELAND

**Definitive postage stamps of Ireland** are the regular series of definitive postage stamps issued by the Irish Free State between 1922 and 1937 and by Republic of Ireland since 1937. The series includes 9 distinctly different designs and the watermark was changed for two issues and the currency was changed on three occasions while the designs remained the same.

The first twelve stamps, the low-values up to 1 shilling, were issued during 1922–23. The three high-values, 2/6, 5/- and 10/- did not appear until 8 September 1937. The designs were: *Sword of Light*, *Map of Ireland*, *Celtic Cross*, *Arms of the Provinces* and *St. Patrick*.



## DOES ANYONE REMEMBER S & H GREEN STAMPS?

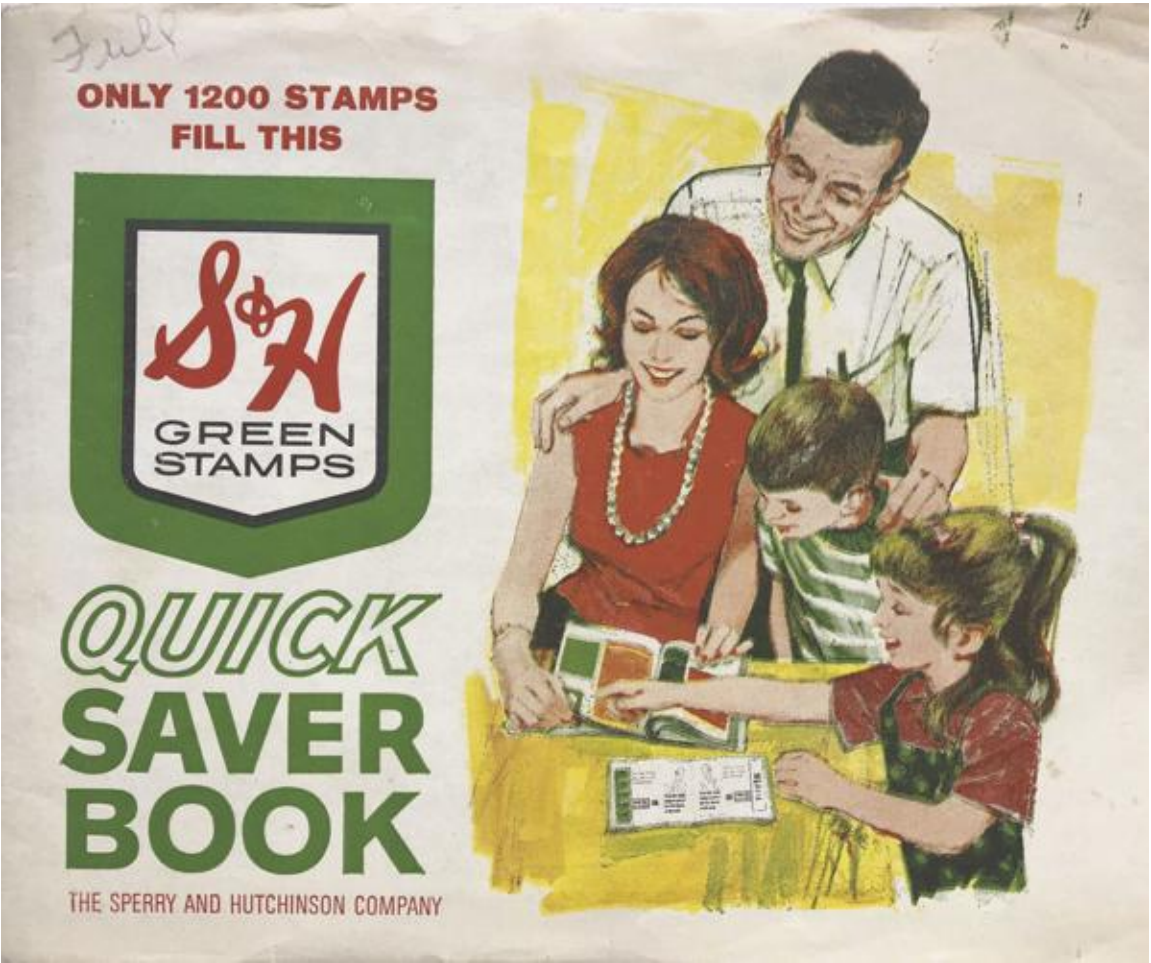
In the prime of Green Stamps' popularity, S&H redemption books and catalogs ranked among the most-printed and distributed items in the United States. Here's how it worked: After you paid for groceries or gasoline you didn't just get change, you received stamps that could be redeemed for things you wanted!

Thomas Sperry of Cranford, NJ and Shelley Byron Hutchinson of Ypsilanti, Michigan founded the Sperry and Hutchison Co. in 1896. They made their money by selling the stamps and redemption books to retailers, then accepting the stamps in exchange for products from S&H catalogs at their redemption centers, which numbered 600 nationwide by the mid-1960s. The stamps were issued in denominations of one, ten, and fifty points, perforated with a gummed reverse. As shoppers accumulated the stamps, they moistened the reverse and mounted them in collector's books, which were provided free by S&H. The books contained 24 pages and filling a page required 50 points, so each book contained 1,200 points. Shoppers could then exchange filled books for premiums, including housewares and other items, from the local Green Stamps store or catalog. Each premium was assigned a value expressed by the number of filled stamp books required to obtain it.

**It is said that in 1964 Sperry & Hutchinson printed three times as many stamps as the U.S. Post Office Department. Wow!**

Shortly thereafter, discount stores undercut the market and S&H stamps fell out of favor, but Sperry & Hutchinson is still in the loyalty marketing business with an online version called S&H Greenpoints. Although sometimes found in postage stamp mixtures, S&H Green Stamps are primarily of interest to cinderella and paper ephemera collectors.

**Do you have any S & H Greenstamps? let us know!**



But what else happens in



# March!?

**Purim** is a Jewish holiday which commemorates the saving of the Jewish people from Haman, who was an official of the Achaemenid Empire who was planning to have all of Persia's Jewish subjects killed.In celebration of their survival, the holiday is celebrated with "days of feasting and gladness, and of sending portions one to another, and gifts to the poor". This tradition continues today for many by:

- Exchanging gifts of food and drink
- Donating charity to the poor
- Eating a celebratory meal, known as se'udat Purim
- Public recitation of the Scroll of Esther
- Reciting additions to the daily prayers and the grace after meals

Other customs include wearing masks and costumes, public celebrations and parades (Adloyada), and eating hamantashen.

**Mardi Gras** is a day of revelry that includes parades, parties and gastronomic indulgence before the Christian fasting season of Lent begins on Ash Wednesday (February 22 in 2023). It marks the last day of the Carnival season, basically a six-week period of partying around the globe.







## WHAT DO YOU DO IN MARCH?

Its a long month – 31 days until April 1.

What is the dictionary definition of the word "march?"

to move along steadily usually with a rhythmic stride and in step with others  
to move in a direct purposeful manner : proceed. : to make steady progress : advance. time marches

Let's use March to move along steadily - forward our personal and professional goals. Watch out for those we care about. Collect a stamp or two. Let us know what your March will bring?

**WHAT RHYMES WITH MARCH?**

STARCH! Who doesn't love carbs?

PARCH! Have a sip of water after your starch!

*The name March is derived from the Latin*



word *Martius* (named after *Mars*, the Roman god of war). *Martius* was the name of the first month in the original Roman calendar. Along with January, May, and June, March is one of several months named after a god.

*March Gemstone: Aquamarine*  
*March Flower: Daffodil*

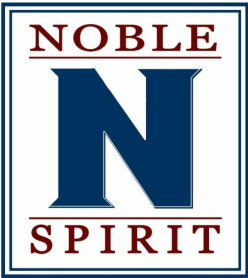
It is always good to be a leader!  
But be a follower! Find us on Instagram  
**Spellman\_Stamp\_Museum**

**every day is something or someone special!**  
**happy birthday to you and your March mates!**

- March 1, 1926 - Pete Rozelle, one-time baseball commissioner
- March 1, 1954 - Ron Howard, actor, director, "Opie" on TV series "Andy Griffith"
- March 1, 1994 - Justin Bieber, Canadian singer-songwriter, dancer
- March 2, 1931 - Mikhail Gorbachev, former Leader of USSR
- March 2, 1962 - Jon Bon Jovi, singer, actor
- March 6, 1475 - Michelangelo, Renaissance painter
- March 6, 1972 - Shaquille O'Neal, NBA star
- March 8, 1945 - Mickey Dolenz, singer, actor, "Mickey" of the "Monkees"
- March 8, 1959 - Lester Holt news anchor, NBC Nightly News
- March 10, 1983 - Carrie Underwood, American Idol winner
- March 11, 1903 - Lawrence Welk, bandleader
- March 13, 1939 - Neil Sedaka, singer, songwriter
- March 14, 1864 - Casey Jones, railroad engineer
- March 14, 1879 - Albert Einstein, physicist
- March 15, 1975 - Eva Longoria, actress, TV series "Desperate Housewives"
- March 19, 1947 - Glenn Close, actress
- March 19, 1955 - Bruce Willis, actor
- March 20, 1948 - Bobby Orr, hockey player
- March 20, 1957 - Spike Lee, director, filmmaker
- March 25, 1947 - Elton John, English singer, songwriter, musician
- March 25, 1965 - Sarah Jessica Parker, actress
- March 27, 1963 - Quentin Tarantino, actor, director
- March 27, 1970 - Mariah Carey, American singer and actress
- March 30, 1853 - Vincent van Gogh, Dutch painter
- March 31, 1935 - Herb Albert, musician



**Were you born in March? We want to know!**  
**Send us an email and we'll mail you some stamps!**  
**And, Happy Birthday!**



Specializing in stamps,  
antiques, books, and  
collectibles.  
The Spellman  
Museum of Stamps  
and Postal History  
Official Events Sponsor



*Power of culture*  
*Spellman  
educational programs are supported in part by a  
grant from the Weston Cultural Council, a local  
agency which is supported by the Mass Cultural  
Council. The Spellman is grateful for all forms of  
support, both financial and via collections.*

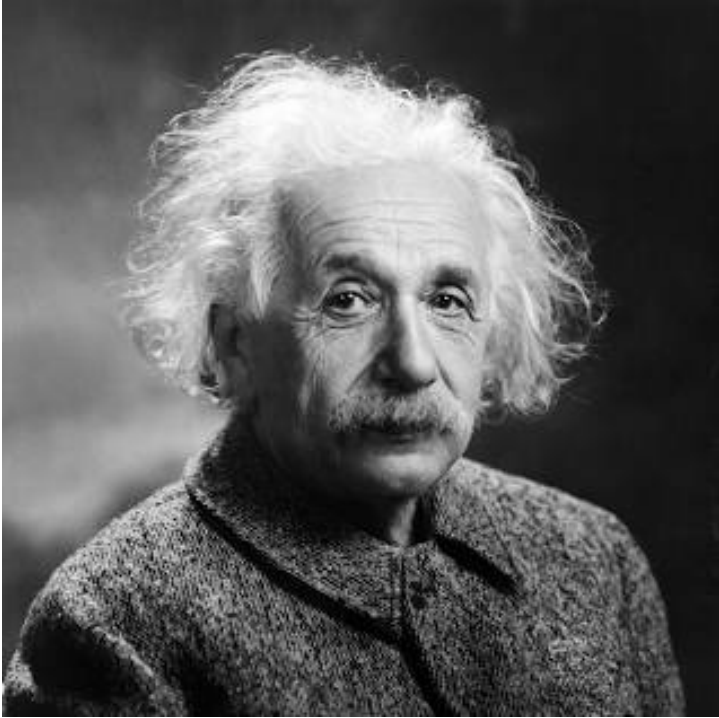
**WHY STAMPS?**  
**WHY THE**  
**SPELLMAN?**

ITS EASY – WE ARE FUN!  
STAMPS ARE TINY PIECES  
OF BEAUTIFUL ARTWORK  
THAT ENGAGE AND  
INSPIRE SO MANY  
PEOPLE.

WE ARE FASCINATED BY THE PLEASURE THESE TINY ADHESIVES PROVIDE TO COLLECTORS OF ALL AGES.

WHAT IS YOUR FAVORITE STAMPS AND WHY?  
SEND US A NOTE AND LET US KNOW – WE WANT TO TELL YOUR STORY!

**OUR FAVORITE of THE MONTH?**  
Mountain Flora:  
Red Lily  
Face Value: Forever Stamp (1 oz. letter)  
These gorgeous "Mountain Flora" stamps were issued to celebrate the beauty of mountain wildflowers. The hand-drawn illustrations create a block print aesthetic. This stamp features the orange-red Wood Lily flower.



**Have we mentioned with love Albert Einstein?**

He was a German-born theoretical physicist, best known for developing the theory of relativity, but he also made important contributions to the development of the theory of quantum mechanics. Relativity and quantum mechanics are the two pillars of modern physics. He was born on March 14, 1879, Ulm, Germany; he died on April 18, 1955 in Princeton, NJ. He was married to Elsa Einstein from 1919–1936. He had three children: Eduard Einstein, Hans Albert Einstein, Lieserl Einstein. He had American, German, Hungarian, Swiss nationalities. He stood 5' 7" and his parents were Hermann Einstein and Pauline Einstein.

**STAMP COLLECTING IS EXCITING! INTERESTED IN JOINING A STAMP CLUB?**

Would you be interested in meeting other stamp collectors? Do you want to share your collection with other philatelists and even sell and buy some stamps? Did you collect when you were young and have now retired and thinking of starting up collecting again? Here are a few of our favorites:

**The Waltham Stamp Club** meets twice a month in the evenings at the Spellman Museum.

**The Samuel Osgood Club** meets twice a month in the evenings in North Andover. Contact Mike Rivet at 978-474-4674 or [by email](#).

**Cape Cod Area Philatelic Group** meets on the second Thursday of each month at 6:30 pm. Meetings are held at the Yarmouth Fire Station #2 Meeting Room, 340 Main Street (Rte 6A), Yarmouth Port, MA, 02675 for more information, please contact [Lou Giorgetti](#). Visit [www.sefsc.org/cape-cod.html](http://www.sefsc.org/cape-cod.html) for even more information.

**Newburyport Stamp Club** meets at 1:30 pm on the second and fourth Wednesday of each month at the Newburyport



Community Center in the Council on Aging section, 331 High St., Newburyport, MA 01950; mailing address Newburyport Stamp Club, Box 5647, Salisbury, MA 01952.

**Sudbury Stamp Club** meets on the second Monday of each month and is eager to welcome new philatelists. Call Sharon K. Wilkes, Program Coordinator, Sudbury Senior Center at 978-443-3055 to join.

**Winthrop Stamp Club** generally meets twice a month on the second and fourth Thursdays beginning at 1:00 p.m. and ending by 3:30 p.m. at the Georgetown Senior Community Center, 51 North Street, Georgetown, MA. Contact Richard L. Johnson, President 978-664-2996 or by [email](#).

## LET'S KEEP IN TOUCH!

***The Spellman Museum is a treasured resource, locally and nationally, and beyond!***

*As a 501(c)3 support-driven entity, we appreciate all forms of support.*

*If you have a collection to be evaluated, feel free to call or [email Joseph Mullin](#), Executive Director, to arrange the visit. He can be reached at 781-768-8367.*

*If you'd like to support the museum with a donation, please visit [spellmanmuseum.org](http://spellmanmuseum.org)*

*If you'd like to visit the Museum, simply stop by Thursdays - Sundays, noon - 5pm. Or, feel free to call to schedule a private tour.*

**We joyfully welcome all!  
Plus we are really fun!**

**781-768-8367**

***YOUTH AND SENIOR MEMBERSHIPS ARE MORE AND MORE POPULAR!***

*The Museum continues to offer a complimentary, one-year membership for children. Youth members receive a monthly packet of topical stamps, worksheets and philatelic information, a discount in the Museum store, a monthly stamp calendar plus free admission for themselves and the family. For more information, contact [Jessica Leuscher](#).*

*Our seniors are a treasured segment of our membership. Established last year, this \$25 membership offers those individuals all of the benefits and joys of membership. [Contact us for more information!](#)*

*Have ideas? Want to share?  
[Please send us any and all ideas!](#)*

Spellman Museum of Stamps and Postal History | 241 Wellesley St, Weston, MA 02493

[Unsubscribe](#) [bhoward@spellmanmuseum.org](mailto:bhoward@spellmanmuseum.org)

[Update Profile](#) | [Constant Contact Data Notice](#)

Sent by [bjlchase@spellmanmuseum.org](mailto:bjlchase@spellmanmuseum.org) powered by



Try email marketing for free today!