

SPELLMAN

MUSEUM OF STAMPS
AND POSTAL HISTORY

JUNE! THE FULL MOON IS SOON!



Why do we all love the full moon?

"Did you see the moon last night?" Each month, these questions, texts, emails and conversations take place among friends, families, colleagues, and neighbors around the globe. No matter how many we have each seen, the full moon holds wonder and mystery. Clear, partially covered by trees or clouds, we love our full moon. There are 13 full moons throughout 2023, and the next full moon will be on Saturday, June 3, 2023, at 11:42 p.m. eastern daylight time. Soon!

There are many terms used to describe full moons — "super moon" indicates a moon that can appear slightly bigger and brighter than normal; a "blue moon" denotes the second full moon in the same month; and various names have been given to the full moons based on their time of year.

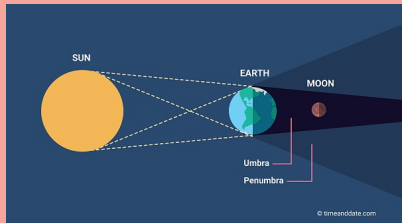
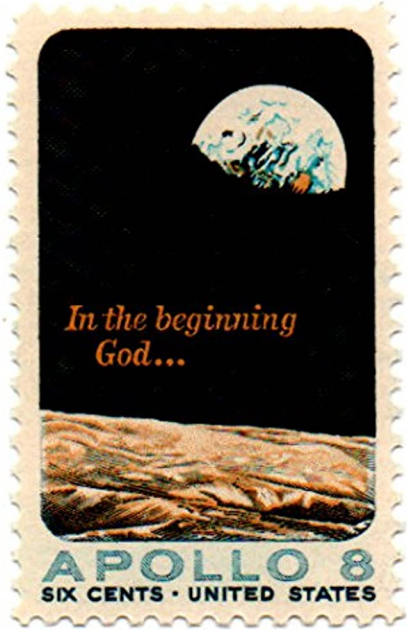
June's full moon is known as the strawberry moon: For millennia, people across the world, including Native Americans in the eastern and central U.S., named the moons after nature's cues. Each full moon has its own name, according to the Farmer's Almanac.

A full moon happens when the moon appears as a complete circle in the sky. We see it as a full orb because the whole of the side of the Moon facing the Earth is lit up by the Sun's rays. The Moon produces no visible light of its own, so we can only see the parts of the Moon that are lit up by other objects.

The moon can appear slightly bigger and brighter than normal depending on the weather and local conditions. There will be four super moons in 2023: July 3



August 1
August 30
September 29
Let us know if you see the moon and
send us some photos!



What Is a Lunar Eclipse?

The Moon moves in an orbit around Earth. At the same time, Earth orbits the Sun. Sometimes Earth moves between the Sun and the Moon. When this happens, Earth blocks the sunlight that normally is reflected by the Moon. (This sunlight is what causes the Moon to shine.) Instead of light hitting the Moon's surface, Earth's shadow falls on the Moon. This is an eclipse of the Moon, or a lunar eclipse. A lunar eclipse can occur only when the Moon is full.

A lunar eclipse can be seen from Earth at night. There are two types of lunar eclipses:

- 1. Total lunar eclipse.
- 2. Partial lunar eclipse.

A total lunar eclipse occurs when the Moon and the Sun are on exact opposite sides of Earth. Although the Moon is in Earth's shadow, some sunlight reaches the Moon. The sunlight passes through Earth's atmosphere, which filters out most of the blue light. This makes the Moon appear red to people on Earth. Earth's shadow passes in front of the Moon until it turns red or orange.

A partial lunar eclipse happens when part of the Moon enters Earth's shadow. In a partial eclipse, Earth's shadow appears very dark on the side of the Moon facing Earth. What people see from Earth during a partial lunar eclipse depends on how the Sun, Earth and Moon align. A lunar eclipse usually lasts for a few hours. At least two partial lunar eclipses happen every year, but total lunar eclipses are rare. It is safe to look at a lunar eclipse.

SUNDAY, AUGUST 27 11AM - 4PM
"ASK THE EXPERT" AND FREE ADMISSION
BRING YOUR UNIQUE, RARE OR FAVORITE STAMP
WITH APPRECIATION AND THANKS TO THE HIGHLAND STREET FOUNDATION



NEW POSTAGE STAMP ISSUED IN JUNE: WATERFALLS

The U.S. Postal Service is celebrating the variety and beauty of American waterfalls with 12 new stamps to be issued on June 13. Each stamp features a photograph with the name of the waterfall and state in which it is located beneath it.

What is a waterfall anyway? It's a river or other body of water's steep fall over a rocky ledge into a plunge pool below. Waterfalls are also called cascades. The process of erosion, the wearing away of earth, plays an important part in the formation of waterfalls. Waterfalls themselves also contribute to erosion.

Many of us think of Niagara - the well know falls on the border of the United States and Canada. Niagara Falls is a group of three waterfalls at the southern end of Niagara Gorge, spanning the border between the province of Ontario in Canada and the state of New York in the United States. The largest of the three is Horseshoe Falls, which straddles the international border of the two countries

Among nature's most beautiful wonders, waterfalls come in all shapes and sizes, from serene cascades to mighty cataracts. The 12 waterfalls featured on the stamps represent many different types — and each is unique.

First row: Deer Creek Falls, Grand Canyon National Park, AZ
Yosemite National Park, CA,
Harrison Wright Falls, Ricketts Glen State Park, PA; and Lower Falls of the Yellowstone River, Yellowstone National Park, WY.
Second row: Waimoku Falls, Haleakalā National Park, HI
Stewart Falls, Mount Timpanogos Wilderness, UT,
Niagara Falls, Niagara Falls State Park, NY
and Dark Hollow Falls, Shenandoah National Park, VA,
Third row: Grotto Falls, Great Smoky Mountains National Park, TN
Sunbeam Falls, Mount Rainier National Park, WA
LaSalle Canyon Waterfall, Starved Rock State Park, Oglesby, IL,
and Upper Falls, Blue Ridge Parkway, NC

So Much Happening in June!

June 1
National Heimlich Maneuver Day: you ok?
National Go Barefoot Day: walk on sand!
National Nail Polish Day: get your pedicure!
National Say Something Nice Day: every day!

June 2
National Donut Day
National I Love My Dentist Day: say "Hi Gene!"

June 3
National Play Outside Day - work from home!

June 4
National Cancer Survivor's Day - we all celebrate you!
National Hug Your Cat Day - every day!

June 6
Russian Language Day - da!

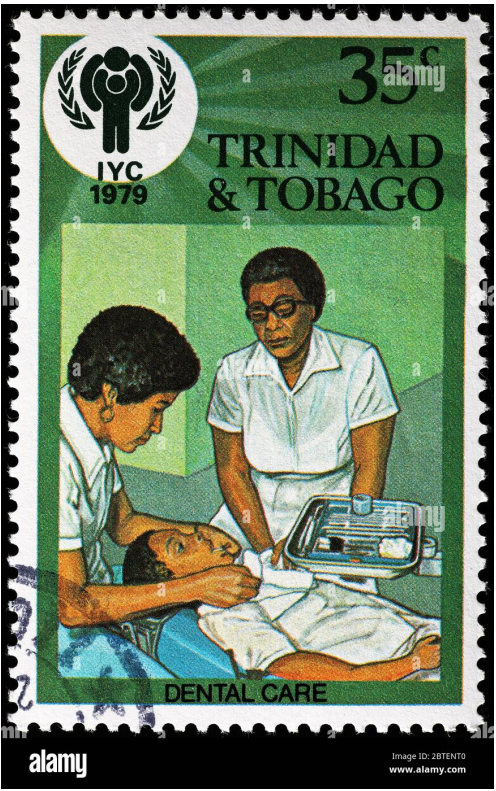
June 7
World Caring Day
National Tailors Day - the fit is everything!
National Chocolate Ice Cream Day - we like vanilla

June 8
World Pet Memorial Day - rainbow bridge!
National Best Friends Day - you're mine!

June 10
National Outlet Shopping Day - such a bargain!

June 11
Say Hi Day - hi!
National Children's Day

June 12
Superman Day - wear your cape!



National Loving Day
June 13
Random Acts of Light Day
June 14
Flag Day - stars and stripes forever!
June 15
Nature Photography Day
June 16
Arborist Appreciation Day - hug a tree and your tree-keeper
June 18
Father's Day
National Wanna Get Away Day
Clean Your Aquarium Day
June 19
Juneteenth
National Take Your Cat to Work Day
National Watch Day - analog or digital?
June 20
National Vanilla Milkshake Day - yes!
National Ice Cream Soda Day - also yes!
June 21
World Motorcycle Day
National Selfie Day
National Seashell Day
National Smoothie Day
World Day of Music
June 23
National Family Owned & Operated Businesses Day
National Take Your Dog to Work Day
June 25
Global Beatles Day - Hey Jude!
June 26
World Refrigeration Day - that's cool
National Beautician's Day - we're not teasing!
National Sunglasses Day
June 28
National Day of Joy
June 29
National Handshake Day - let's shake on it!
June 30
National Meteor Watch Day - look!
National Corvette Day



Speaking of the Beatles...

At left, a gorgeous stamp honoring world renowned singer and songwriter John Lennon, founding member of the Beatles and a successful solo artist. The photo on the stamp was taken for the late singer's fifth 1974 post-Beatles solo album "Walls and Bridges" by photographer Bob Gruen and shows Lennon with messy hair and his signature round-rimmed glasses. The design features an array of prismatic colors and are topped with Lennon's signature.



WHEN I THINK OF THE SPELLMAN, I THINK....
EMAIL US AND TELL US WHAT YOU THINK!

June Birthday?

Anyone born between May 22 and June 21 is a Gemini. Gemini is the third sign in the zodiac. A Gemini is playful and intellectually curious, constantly juggling a variety of passions, hobbies, careers, and friend groups. They are the social butterflies of the zodiac: These quick-witted twins can talk to anyone about anything. Find them buzzing between happy hours, dinner parties, and dance floors. Do you know a Gemini? Lucky you!

When is your birthday? [Let us know and we'll send you a fun mailing!](#)

June Gemstone: Pearl and Moonstone
June Flower: Rose and Honeysuckle

It is always good to be a leader!
But be a follower! Find us on Instagram
Spellman_Stamp_Museum

Do You Know Our Accession Partner?

We partner with [NobleSpirit](#), a firm specializing in rare stamps, coins, paper money, books, antiques, and collectibles.
NobleSpirit is our 2023 Events sponsor and a trusted and reliable resource.

Other Cool Information

***What Rhymes with
"June?"***

Prune (not delicious)

Loon (see right)

Moon (see above)

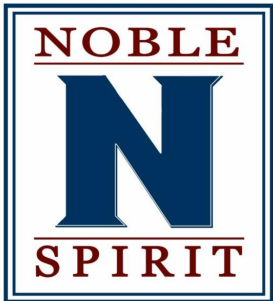
Tune

Soon (now!)

Spoon

Noon

Balloon!



Specializing in stamps, antiques, books, and collectibles.

The Spellman Museum of Stamps and Postal History Official Events Sponsor



Power of culture

Spellman educational programs are supported in part by a grant from the Weston Cultural Council, a local agency which is supported by the Mass Cultural Council. The Spellman is grateful for all forms of support, both financial and via collections.

WHY STAMPS? WHY THE SPELLMAN?

ITS EASY – WE ARE FUN!
STAMPS ARE TINY PIECES
OF BEAUTIFUL ARTWORK
THAT ENGAGE AND
INSPIRE SO MANY
PEOPLE.

WE ARE FASCINATED BY
THE PLEASURE THESE
TINY ADHESIVES
PROVIDE TO
COLLECTORS OF ALL
AGES.

WHAT IS YOUR
FAVORITE STAMPS AND
WHY?
SEND US A NOTE AND
LET US KNOW – WE
WANT TO TELL YOUR
STORY!

ALBERT EINSTEIN

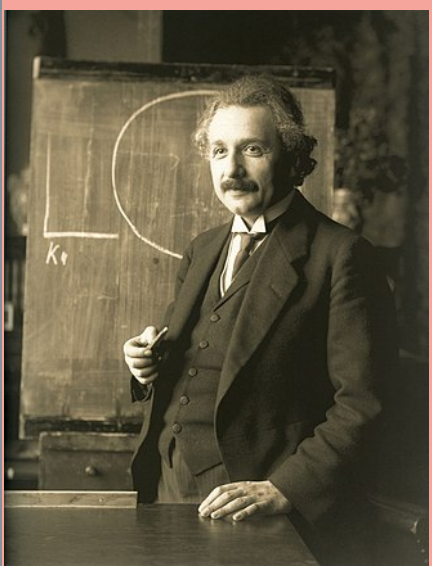
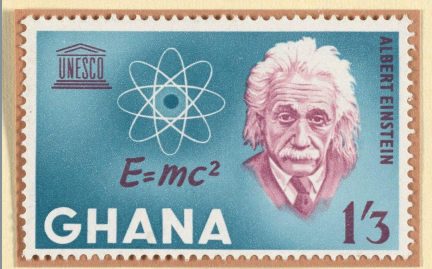
was a German-born theoretical physicist, widely acknowledged to be one of the greatest and most influential physicists of all time. Best known for developing the theory of relativity, he also made important contributions to the development of the theory of quantum mechanics.



How about these beauties? Ellsworth Kelly featured on stamps - May, 2019.

Ellsworth Kelly forged a distinctive style of abstraction over his seven decades as an artist. Dedicated at the Ellsworth Kelly Studio in Spencertown, NY, Mr. Kelly created camouflage patterns during his service in WWII. The stamps celebrate the American master of abstract painting, capturing the creative talent of Kelly and will be seen by millions as Forever stamps on cards and letters."

Characterized by precise shapes rendered in bold, flat colors, Ellsworth Kelly's art encompasses painting, sculpture and works on paper, drawing on careful observations of light and shadow, negative space, and line and form. In painting shapes — like a tennis court, a smokestack on a tugboat, or the roof of a barn — as flat planes of color, Kelly turned reality into abstraction. He was also one of the first artists to create shaped canvases and to integrate art with modern architecture. Even late in his career, Kelly continued to refine his vision, constantly returning to his notebooks and earlier works to further develop ideas and explore new directions. Today his work is in the permanent collections of major museums in the U.S. and around the world. The 20 stamps on the pane feature 10 of Kelly's artworks.



STAMP COLLECTING IS EXCITING! INTERESTED IN JOINING A STAMP CLUB?

Would you be interested in meeting other stamp collectors? Do you want to share your collection with other philatelists and even sell and buy some stamps? Did you collect when you were young and have now retired and thinking of starting up collecting again? Here are a few of our favorites:

The Waltham Stamp Club meets twice a month in the evenings at the Spellman Museum.

The Greater Boston Philatelic Society meets on the fourth Wednesday of each month at 7:00 pm. All meetings are also available virtually on Zoom.
The Walnut Street Center
291 MYSTIC AVENUE MEDFORD, MA 02155
at 7pm EST on the 4th Wednesday of the month.
For a zoom invite please email us at:
information@thegbps.com

The Samuel Osgood Club meets twice a month in the evenings in North Andover. Contact Mike Rivet at 978-474-4674 or [by email](#).

Cape Cod Area Philatelic Group meets on the second Thursday of each month at 6:30 pm. Meetings are held at the Yarmouth Fire Station #2 Meeting Room, 340 Main Street (Rte 6A), Yarmouth Port, MA, 02675 for more information, please contact [Lou Giorgetti](#). Visit www.sefsc.org/cape-cod.html for even more information.

Newburyport Stamp Club meets at 1:30 pm on the second and fourth Wednesday of each month at the Newburyport Community Center in the Council on Aging section, 331 High St., Newburyport, MA 01950.

Sudbury Stamp Club meets on the second Monday of each month and is eager to welcome new philatelists. Call Sharon K. Wilkes, Program Coordinator, Sudbury Senior Center at 978-443-3055 to join.

Winthrop Stamp Club generally meets twice a month on the second and fourth Thursdays beginning at 1:00 p.m. and ending by 3:30 p.m. at the Georgetown Senior Community Center, 51 North Street, Georgetown, MA. Contact Richard L. Johnson, President 978-664-2996.

LET'S KEEP IN TOUCH!

The Spellman Museum is a treasured resource, locally and nationally, and beyond!

As a 501(c)3 support-driven entity, we appreciate all forms of support.

If you have a collection to be evaluated, feel free to call or [email Joseph Mullin](#), Public Affairs Director, to arrange the visit. He can be reached at 781-768-8367.

If you'd like to support the museum with a donation, please visit spellmanmuseum.org

If you'd like to visit the Museum, simply stop by Thursdays - Sundays, noon - 5pm. Or, feel free to call to schedule a private tour.

**We joyfully welcome all!
Plus we are really fun!**

781-768-8367

YOUTH AND SENIOR MEMBERSHIPS ARE MORE AND MORE POPULAR!

The Museum continues to offer a complimentary, one-year membership for children. Youth members receive a monthly packet of topical stamps, worksheets and philatelic information, a discount in the Museum store, a monthly stamp calendar plus free admission for themselves and the family. For more information, contact [Jessica Leuschner](#).

Our seniors are a treasured segment of our membership. Established last year, this \$25 membership offers those individuals all of the benefits and joys of membership. [Contact us for more information!](#)

*Have ideas? Want to share?
[Please send us any and all ideas!](#)*

