

# SPELLMAN

MUSEUM OF STAMPS  
AND POSTAL HISTORY

## MONTH 2 - JUST FOR YOU HELLO FEBRUARY 2023!

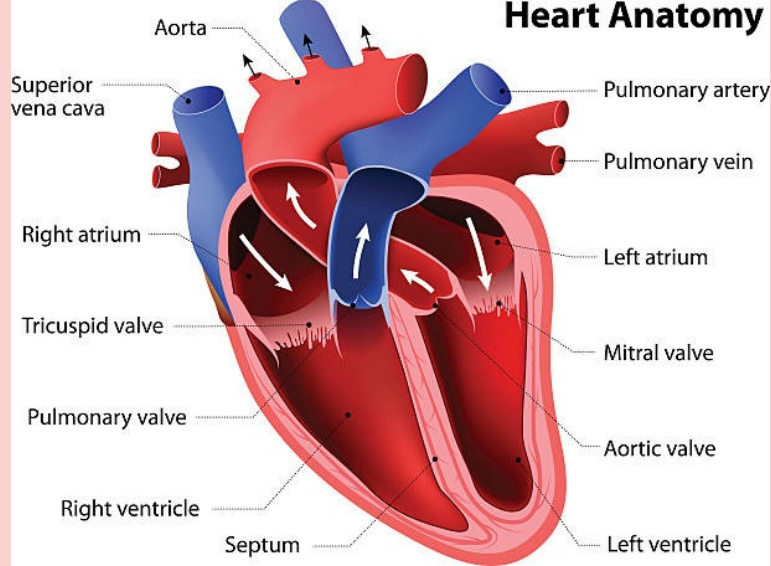
### THE MONTH OF HEARTS

Its that time again - February - the month we often associate with a few specific things - the ground hog, the valentine, our past presidents, and leap year. Let's spend a moment on Valentine's Day, and the heart. What is the heart? The heart is a fist-sized organ that pumps blood throughout your body. It's the primary organ of your circulatory system. Your heart contains four main chambers made of muscle and powered by electrical impulses. Your brain and nervous system direct your heart's function. The right ventricle pumps the low-oxygen blood to the lungs to pick up a fresh supply of oxygen. The left atrium receives to high-oxygen blood from the lungs and pumps it to the left ventricle. The left ventricle pumps the high-oxygen blood to the rest of the body.

#### **we don't have the heart to tell you...**

- Your heart beats over 100,000 times per day.
- Your heart pumps about 1.5 gallons of blood every minute. Over the course of a day, that adds up to over 2,000 gallons.
- There are 60,000 miles of blood vessels in your body. That's enough to go around the world twice!
- The average heartbeat of a woman is about 8 beats a minute faster than a man's heartbeat.
- An adult heart is about the size of two hands clasped together. A child's heart is about the size of a fist.
- Every cell in the human body gets blood from the heart except for the cornea.
- The right side of your heart pumps blood into your lungs. The left side of your heart pumps blood back through your body.
- The most number of heart attacks occur each year on Christmas Day. The day after Christmas and New Year's Day are close behind.

## Heart Anatomy



### HEARTS ON STAMPS - A FAVORITE FOR MANY!

The ancient Chinese conceived the art of cutting paper in lace-like patterns. The practice spread across Asia and Europe, and was eventually brought to the United States by German immigrants settling in Pennsylvania. Paper cutting, also known as *scherenschnitte*, was closely related to milestones in the Pennsylvania Dutch community, including birth, marriage, and death. Perhaps it was seen most often in courtship, as witnessed in romantic Valentines from the era. This USPS stamp was issued in 2014 inspired by this artistic method.



This colorful stamp was the first Love stamp to be released after Valentine's Day in 1985. The U.S. Postal Service reasoned the stamps could be used all year. Artist Corita Kent created the design. *See below for more about Ms. Kent.*

The First Day of Issue ceremonies took place on the soundstage where the television show, "Love Boat," was filmed. Who Knew?

## About Corita Kent

Prolific artist, educator, and advocate for social justice, Ms. Kent was commissioned to create a postage stamp that was issued in 1985. Prior to her significant contributions on the east coast, she entered the religious



order Immaculate Heart of Mary, eventually heading up the art department at Immaculate Heart College in Los Angeles, California. Her work evolved from figurative and religious to incorporating advertising images and slogans, popular song lyrics, biblical verses, and literature.



Throughout the '60s, her work became increasingly political, urging viewers to consider poverty, racism, and injustice. In 1968 she left the order and moved to Boston. She's renowned for her design of the National Grid gas tank in Boston Harbor featuring giant swathes of color in primary and secondary shades. Kent once said of her design, "It's a joyous expression, joining heaven and earth together." Who knows the alleged secret of the artwork on the tank? Whose profile is reputed to be a part of this iconic graphic?

## 2023 NEW LOVE STAMP

The USPS is celebrating 50 years since the first Love stamp was issued with two new Love stamps, one featuring a kitten and the other a puppy with their front paws resting atop a big heart. The stamp designs were painted with oils on wood panel, then scanned and edited digitally. Art director Ethel Kessler designed the stamps with original art by Chris Buzelli. LOVE!!!!!!



# we love LOVE!

The USPS introduced the Love series in 1973. The Love stamps are usually issued in time for Valentine mailing and feature designs filled with hearts, roses, swans, and more, celebrating every splendor of that many-splendored thing. Designed by American artist Robert Indiana, this L-O-V-E stamp was issued for special occasion uses such as weddings or valentines. In keeping with its theme, it was released in Philadelphia, "The City of Brotherly Love." It is the first issue in the popular "Love" series.

Requests for another Love stamp began to pour into the USPS. In 1982, they released a second stamp, with the word Love spelled out in flowers. Two years later, the third stamp was released. The stamps were "not just for Valentine's Day, but for special occasions throughout the year, such as weddings, birthdays, anniversaries, and letters to loved ones."

In 1987, thanks to popularity and wide usage, the USPS officially announced that they would issue a new Love stamp every year. By the following year, annual production of Love stamps neared one billion. WE LOVE THAT!



## CUT IT OUT! paper cutting....

**Scherenschnitte** means "scissor cuts" in German - the art of paper cutting design. The artwork often has rotational symmetry within the design, and common forms include silhouettes, valentines, and love letters.

**Papel picado** means "paper cutting" in Mexico.

Often in the form of large, colorful, tissue-paper banners which are strung up overhead, it can also refer to small "banderitas" often used for table decorations.

3 examples of gorgeous postage stamps featuring paper cut designs.







feasting day before the Christian tradition of Lent begins on the following day, Ash Wednesday.

- February 22 is Ash Wednesday, which marks the start of Lent.
- February 27 is Clean Monday. Also called Pure Monday, this day marks the beginning of Great Lent for followers of the Eastern Orthodox Christian Church. This day is similar to Ash Wednesday of the Western Church.
- February is African-American History Month



## SPEAKING OF THE GROUND HOG: GROUND HOG STAMPS!

Face Value: 22 cents  
Issued in 1987

Did you know that woodchucks are the same as groundhogs?! They just have two names! And don't forget to watch the classic movie AGAIN AND AGAIN!



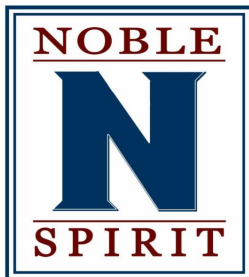
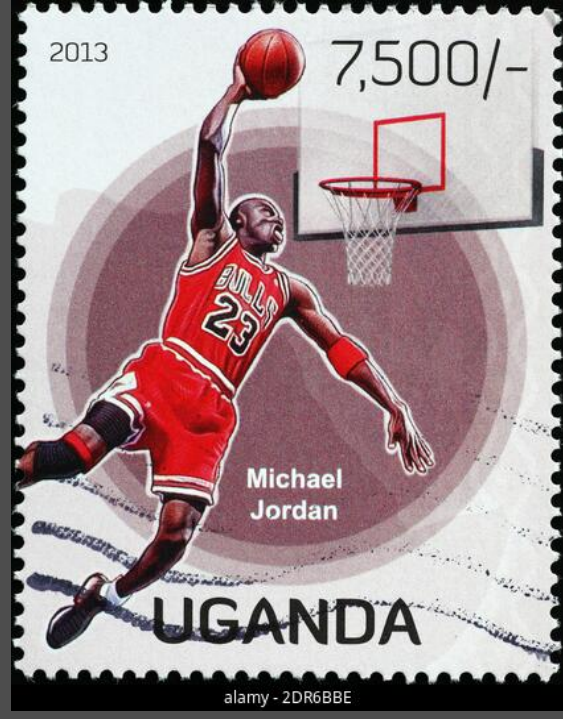
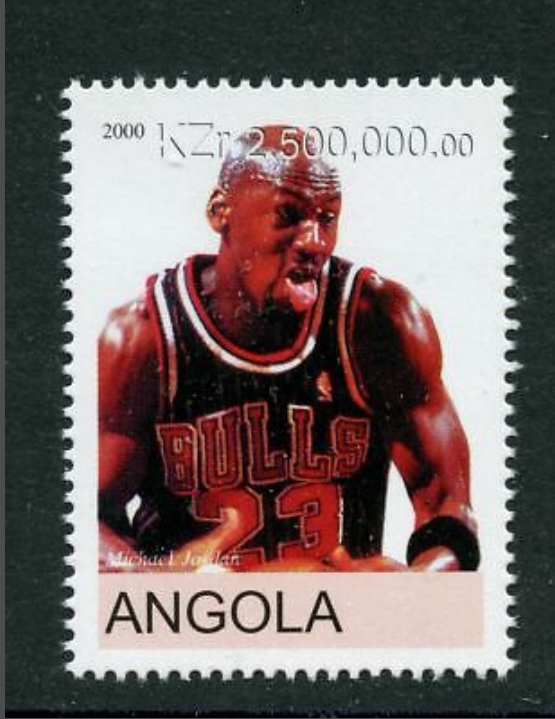


### Who was born in February?

- February 1, 1901 Clark Gable, actor, "Rhett Butler" in "Gone with the Wind"
- February 1, 1938 Sherman Hemsley, "George" on the TV series "The Jeffersons"
- February 3, 1894 Norman Rockwell, renowned painter
- February 4, 1902 Charles Lindbergh, aviator, first to fly solo over the Atlantic
- February 4, 1913 Rosa Parks, civil rights activist
- February 6, 1911 Ronald Reagan, 40th U.S. President (1981-1989)
- February 7, 1812 Charles Dickens, novelist, "A Christmas Carol"
- February 7, 1966 Chris Rock, comedian, actor
- February 8, 1931 James Dean actor
- February 11, 1936 Burt Reynolds, actor
- February 12, 1809 Charles Darwin, Author, "Origin of the Species"
- February 13, 1873 L.L. Bean, outdoorsman...yes, the clothing line
- February 14, 1913 Jimmy Hoffa, Teamsters union leader who disappeared in 1971
- February 16, 1958 Ice-T, actor, rapper, TV series "Law & Order: SVU"
- February 16, 1959 John McEnroe, hot tempered tennis champion
- February 17, 1936 Jim Brown, Cleveland Browns, greatest runner in NFL history
- February 17, 1954 Rene Russo, actress
- February 17, 1963 Michael Jordan, one of greatest players in NBA history
- February 18, 1965 Dr. Dre, born Andre Romelle Young, rapper, record producer.

**Were you born in February? We want to know!  
Send us an email and we'll mail you some stamps!  
And, Happy Birthday!**





Specializing in stamps, antiques, books, and collectibles.

The Spellman Museum of Stamps and Postal History  
Official Events Sponsor



Power of culture

*Spellman educational programs are supported in part by a grant from the Weston Cultural Council, a local agency which is supported by the Mass Cultural Council. The Spellman is grateful for all forms of support, both financial and via collections.*

## WHY STAMPS? WHY THE SPELLMAN?

ITS EASY – WE ARE FUN!  
STAMPS ARE TINY PIECES OF BEAUTIFUL ARTWORK THAT ENGAGE AND INSPIRE SO MANY PEOPLE.

WE ARE FASCINATED BY THE PLEASURE THESE TINY ADHESIVES PROVIDE TO COLLECTORS OF ALL AGES.

**WHAT IS YOUR FAVORITE STAMPS AND WHY?**  
**SEND US A NOTE AND LET US KNOW – WE WANT TO TELL YOUR STORY!**

**OUR FAVORITE of THE MONTH?**



## STAMP COLLECTING IS EXCITING! INTERESTED IN JOINING A STAMP CLUB?

Would you be interested in meeting other stamp collectors? Do you want to share your collection with other philatelists and even sell and buy some stamps?



**JAMES  
DEAN/LEGENDS OF  
HOLLYWOOD**

Full Sheet of 20 x 32-  
Cent Postage Stamps,  
USA 1996, Scott 3082

Designed by Michael Deas  
of New Orleans, Louisiana,  
the stamp portrays Dean,  
based on an image from a  
photograph taken by Roy  
Schatt in 1954.

Actor James Dean was  
born on February 8, 1931,  
in Marion, Indiana. During  
his brief career, he quickly  
became a teen idol  
because his work spoke for  
the youth of the 1950s. He  
starred in only three  
movies: "East of Eden  
(1954)," "Rebel Without a  
Cause (1955)," and "Giant  
(1955)," before his  
untimely death in a car  
crash on September 30,  
1955.

Both "Rebel Without a  
Cause" and "Giant" were  
released after his death.

Did you collect when you were young and have now  
retired and thinking of starting up collecting again? Here  
are a few of our favorites:

**The Waltham Stamp Club** meets twice a month in the  
evenings at the Spellman Museum.

**The Samuel Osgood Club** meets twice a month in the  
evenings in North Andover. Contact Mike Rivet at  
978-474-4674 or [by email](#).

**Cape Cod Area Philatelic Group** meets on the first  
Thursday of each month at 6:15 pm. Meetings are held at the  
Yarmouth Fire Station #2 Meeting Room, 340 Main Street  
(Rte 6A), Yarmouth Port, MA, 02675 for more information,  
please contact [Peter Bono by email](#).

**Newburyport Stamp Club** meets at 1:30 pm on the second  
and fourth Wednesday of each month at the Newburyport  
Community Center in the Council on Aging section, 331 High  
St., Newburyport, MA 01950; mailing address Newburyport  
Stamp Club, Box 5647, Salisbury, MA 01952.

**Sudbury Stamp Club** meets on the second Monday of each  
month and is eager to welcome new philatelists. Call Sharon  
K. Wilkes, Program Coordinator, Sudbury Senior Center at  
978-443-3055 to join.

**Winthrop Stamp Club** generally meets twice a month on  
the second and fourth Thursdays beginning at 1:00 p.m. and  
ending by 3:30 p.m. at the Georgetown Senior Community  
Center, 51 North Street, Georgetown, MA. Contact Richard  
L. Johnson, President 978-664-2996 or by [email](#).

## LET'S KEEP IN TOUCH!

***The Spellman Museum is a  
treasured resource, locally and  
nationally, and beyond!***

*As a 501(c)3 support-driven entity, we  
appreciate all forms of support.*

*If you have a collection to be evaluated,  
feel free to call or [email Joseph Mullin](#),  
Executive Director, to arrange the visit.  
He can be reached at 781-768-8367.*

*If you'd like to support the museum with a  
donation, please visit [spellmanmuseum.org](#)*

*If you'd like to visit the Museum, simply  
stop by Thursdays - Sundays, noon - 5pm.  
Or, feel free to call to schedule a private  
tour.*

**We joyfully welcome all!  
Plus we are really fun!**

**781-768-8367**

**YOUTH AND SENIOR  
MEMBERSHIPS ARE MORE  
AND MORE POPULAR!**

*The Museum continues to offer a  
complimentary, one-year membership for  
children. Youth members receive a monthly  
packet of topical stamps, worksheets and  
philatelic information, a discount in the  
Museum store, a monthly stamp calendar  
plus free admission for themselves and the  
family. For more information, contact  
[Jessica Leuscher](#).*

*Our seniors are a treasured segment of our  
membership. Established last year, this  
\$25 membership offers those individuals all  
of the benefits and joys of membership.  
[Contact us for more information!](#)*

*Have ideas? Want to share?  
[Please send us any and all ideas!](#)*

Spellman Museum of Stamps and Postal History | 241 Wellesley St, Weston, MA 02493

[Unsubscribe bhoward@spellmanmuseum.org](mailto:bhoward@spellmanmuseum.org)

[Update Profile](#) | [Constant Contact Data Notice](#)

Sent by [jlchase@spellmanmuseum.org](mailto:jlchase@spellmanmuseum.org) powered by



Try email marketing for free today!