

SPELLMAN

MUSEUM OF STAMPS
AND POSTAL HISTORY

AUGUST IS A MUST!



*We are so excited about this month!
in addition to all of our usual fun and games,
we have excitement to share!*



***Join us for free admission on
Sunday, August 27 from 11-4pm
with great thanks to the [Highland Street
Foundation](#). we have been selected once again
to participate in "august adventures" - their
program to share culture with our community.***



***DISCOVER THE WORTH:
STAMP AND COIN ROADSHOW***
*Bring your stamps and coins for expert insight
and valuations courtesy of our partner [Noble
Spirit](#). [Please RSVP if you would like to book
time to review your items.](#)*

And so much more fun to come in August!

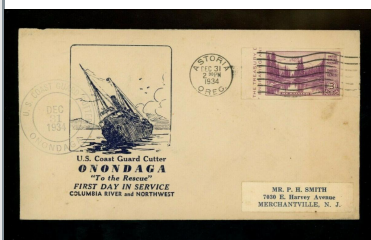


Summer never seems long enough. Thankfully we have 31 days in July to extend the 7th month of the year. When we turn the page to August, we know that the days will feel a bit shorter as we enjoy the weeks that lead to autumn. Here at the Spellman, we have a full month of fun and intend to enjoy every single day!

Notable things in August:



August 1 - National Girlfriend Day - this should be every day!
August 2 - National Coloring Book Day - grab a crayon!
August 3 - National IPA Day - have a sip - and another!
August 4 - National U.S. Coast Guard Birthday - we salute you!
August 5 - National Work Like a Dog Day - most days
August 7 - National Lighthouse Day
August 9 - National Booklovers Day - turn the page!
August 12 - World Elephant Day
August 18 - National Breast Cancer Research Day
August 26 - National Dog Day
August 30 - National Beach Day - should be every day



IT'S SAFE TO GO IN THE WATER!

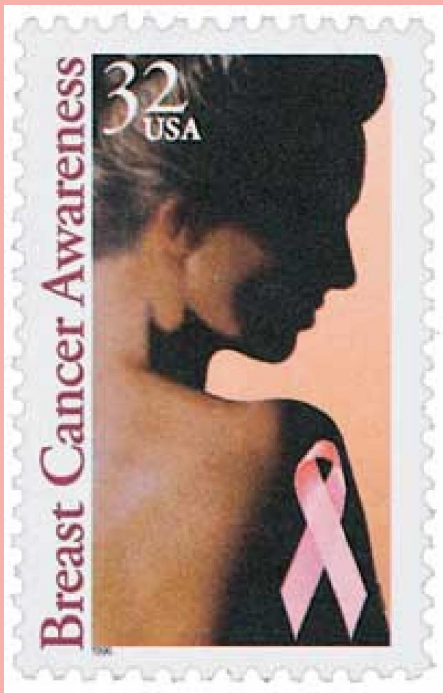
United States Coast Guard (USCG) is a branch of the military service within the U.S. armed forces that is charged with the enforcement of maritime laws. It consists of approximately 35,000 officers and enlisted personnel, in addition to civilians. It is under the jurisdiction of the Department of Homeland Security. In time of war, it functions as part of the the U.S. Navy and is under the direction of the United States president.



The USCG was established in 1790 by Secretary of the Treasury Alexander Hamilton as the Revenue Marine Service. It later became the Revenue Cutter Service and, in 1915, was combined with the U.S. Lifesaving Service (formed 1878) to become the Coast Guard. It was under the (peacetime) jurisdiction of the Treasury Department until 1967, when it was transferred to the Department of Transportation. In 2003 the Coast Guard was placed under the jurisdiction of the newly created Department of

Homeland Security.

The Coast Guard enforces all applicable federal laws on the high seas and waters within the territorial jurisdiction of the United States. It administers laws and enforces regulations for the promotion of safety of life and property along the entire U.S. coast, including Alaska and Hawaii. It develops and operates aids to navigation in order to maintain the safety of ports and vessels in U.S. territorial waters. Don't you feel safer knowing this?



BREAST CANCER AWARENESS - STAMPS HELP

A 1997 law directed the U.S. Postal Service to issue its first semipostal, a stamp sold with a surcharge to raise funds for a specific cause. Other countries have had mixed success with fundraising stamps, but the subject for the first U.S. semipostal was one that Americans truly took to heart: breast cancer research.

Stamps that highlight sensitive social issues are often extremely difficult to design, especially stamps that focus on diseases. In late 1997, U.S. Postal Service art director Ethel Kessler, herself a breast cancer survivor, began experimenting with concepts involving photographs and the pink ribbon that symbolizes breast cancer awareness. But when the preliminary designs proved to be far too somber, she decided to explore fresh approaches by enlisting illustrator Whitney Sherman of Baltimore, Maryland.



Shown at left, Sherman developed numerous pencil sketches and color studies showing women in various poses, all of them intriguing; however, one design really stood out. It pictured a woman reaching above and behind her, as if preparing to conduct a breast self-examination. Mindful of mythology, Sherman remembered Diana, goddess of the hunt—a strong, independent, survival-minded figure—and the artwork developed into a depiction of the goddess reaching for an arrow. Kessler and Sherman finalized this heroic and hopeful image by removing a target from the figure's right breast and encircling the area with a concise phrase. The text complemented the visuals and clearly encapsulated the message of the stamp: "Fund the fight. Find a cure."

Combining an evocative design with fundraising for a worthy cause, the Breast Cancer Research semipostal has exceeded every expectation, with more than 440 million stamps sold since its issuance in 1998. The stamp, which continues to enjoy steady sales, has raised in excess of \$30 million for breast cancer research.



Thank you, Vera Peters, MD

Mildred Vera Peters was a Canadian oncologist and clinical investigator. Dr. Peters received her medical degree from the University of Toronto in 1934, and in 1950 she published a landmark paper demonstrating for the first time that many patients with early Hodgkin's disease, then considered incurable, could be completely cured if given high-dose radiation. She later went on to study the use of radiation therapy in

the treatment of breast cancer. Her research, carried out at the Princess Margaret Hospital in Canada demonstrated that breast-conserving surgery followed by radiation was just as effective as radical mastectomy which had a significant impact on the lives of the many women who experience breast cancer. Peters' original research was met with skepticism by the medical establishment in the 1950s and she remarked in an interview that it took over 10 years for her findings to be accepted. And, of note to we philatelists, she was commemorated on a postage stamp in 2020 by the Canadian Postal Service. Postage stamps featuring breast cancer

WHAT IS WORLD ELEPHANT DAY AND WHY?

Oh wait, when is your birthday? If you have an August birthday, send us your information and we'll send you a fun packet of celebratory stamps!

Happy Birthday to You!



DID YOU KNOW?

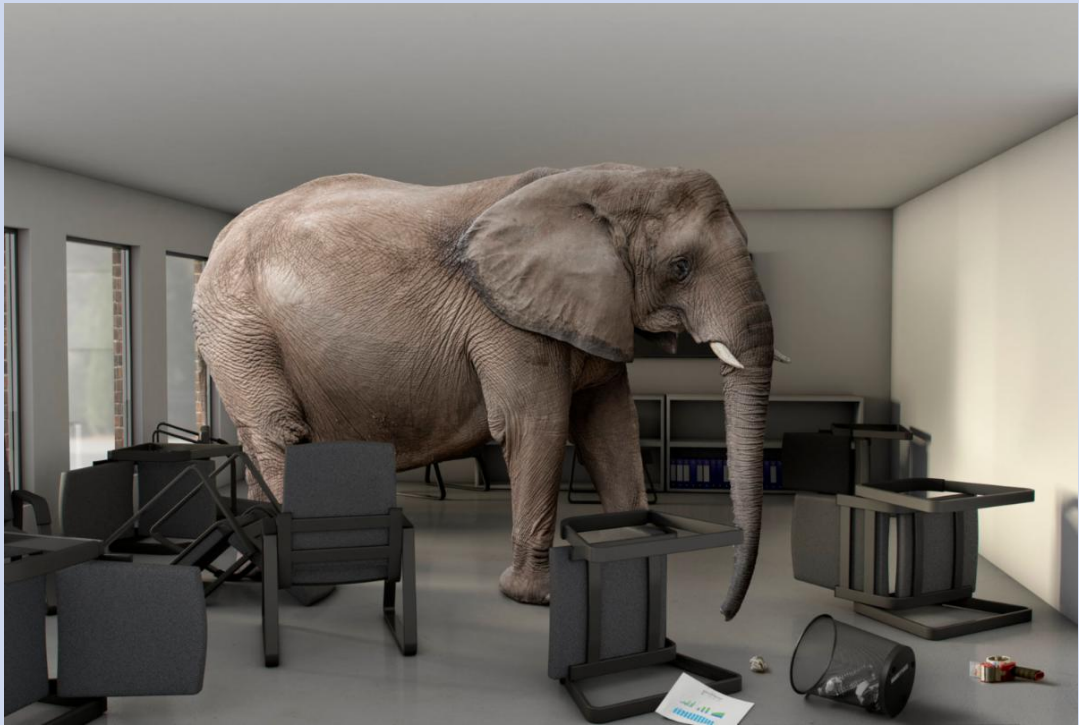
Elephants have around 150,000 muscle units in their trunk. Their trunks are perhaps the most sensitive organ found in any mammal. Elephants use their trunks to suck up water to drink – it can contain up to 8 litres of water. They also use their trunks as a snorkel when swimming.

Elephant in the Room?

If you say there is an elephant in the room, you mean that **there is an obvious problem or difficult situation that people do not want to talk about**. The expression “elephant in the room”, sometimes also “elephant in the living room”, means “a big issue everyone is aware of, but which is being ignored, because everybody finds discussion about it uncomfortable”. The rationale behind the idiom is that an elephant in a (living) room would be impossible to overlook, but people in the room can nevertheless choose to behave as if the elephant was non-existent. Have you ever had an elephant in the room? Show him the door!

A BIT MORE ABOUT ELEPHANTS...

There are three species of elephant: African Savanna (Bush), African Forest and Asian. The ears of African elephants are much larger than their cousins and are described as being shaped like the African continent, whereas the ears of Asian elephants are shaped like the Indian subcontinent.





And now, more about elephants...

THEIR TUSKS ARE ACTUALLY TEETH!

Elephant tusks are actually enlarged incisor teeth which first appear when elephants are around 2 years old. Tusks continue growing throughout their lives. Tusks are used to help with feeding - pulling bark off trees or digging up roots - or as a defense when fighting. But these beautiful tusks often cause elephants danger. They're made from ivory; a much desired object.

ELEPHANTS ARE CONSTANTLY EATING

Elephants eat grasses, leaves, shrubs, fruits and roots depending on the season and their habitat. When it's particularly dry, elephants will eat more woody parts of trees and shrubs like twigs, branches and barks. They need to eat up to 330 pounds of food per day – that's around 375 tins of baked beans – although half of this may leave the body undigested. Elephants eat so much that they can spend up to three-quarters of their day just eating.

A BABY ELEPHANT CAN STAND

WITHIN 20 MINUTES OF BIRTH

Elephant calves are able to stand within 20 minutes of being born and can walk within 1 hour. After two days, they can keep up with the herd. This incredible survival technique means that herds of elephants can keep migrating to find food and water to thrive.



NEED SOME ASSISTANCE WITH TEACHING?
WE CAN HELP! CONTACT US FOR TEACHING TOOLS, CONTENT AND HOW STAMPS CAN BE GREAT LEARNING AIDS!

Join us on Wednesday, September 20
5-7 pm
for our open house!

WHEN'S YOUR BIRTHDAY?
LOTS OF GREAT PEOPLE WERE BORN IN AUGUST...

August 1. Jason Momoa, Sam Mendes.
August 2. Mary-Louise Parker, Peter O'Toole
August 3. Martin Sheen
August 4. Billy Bob Thornton
August 5. Jonathan Silverman, Loni Anderson
August 6. Vera Farmiga
August 7. Charlize Theron
August 10 Antonio Banderas
August 13 Alfred Hitchcock
August 14 Mila Kunis
August 16 Madonna
August 18 Patrick Swayze
August 19 Bill Clinton
August 23 Kobe Bryant
August 26 Mother Teresa

TUDORS ON STAMPS: OPULENCE!

Recently we visited the de Young Museum -- San Francisco's beautiful fine arts museum. Located in Golden Gate Park, it is a component of the Fine Arts Museums of San Francisco, along with the Legion of Honor. Our favorite exhibit featured the Tudor reign in England, and the storied history of Henry VIII. Oh, the velvet, gilding and jewels!



Henry VIII

Who was the real Henry VIII? Henry VIII's reign (1509-47) is usually remembered for the King's six wives and his legendary appetite. Infamously, he sent two of his wives, Anne Boleyn and Catherine Howard, to their deaths on the executioner's block at the Tower of London.

Henry VIII was born at Greenwich on June 28, 1491, the second son of Henry VII and Elizabeth of York. He became heir to the throne on the death of his elder brother, Prince Arthur, in 1502 and succeeded in 1509.

In his youth he was athletic and highly intelligent. Henry's scholarly interests included writing both books and music, and he was a lavish patron of the arts. He was an accomplished player of many instruments and a composer.

During his reign, there were two issues very important for the later history of England and the monarchy: the succession and the Protestant Reformation, which led to the formation of the Church of England. Henry had married his brother's widow, Catherine of Aragon, in 1509. Catherine had produced only one surviving child - a girl, Princess Mary, born in 1516. By the end of the 1520s, Henry's wife was in her forties and he was desperate for a son.

The Tudor dynasty had been established by conquest in 1485 and Henry was only its second monarch. England had not so far had a ruling queen, and the dynasty was not secure enough to run the risk of handing the Crown on to a woman, risking disputed succession or domination of a foreign power through marriage.

Henry had anyway fallen in love with Anne Boleyn, the sister of one of his many mistresses, and tried to persuade the Pope to grant him an annulment of his marriage on the grounds that it had never been legal. Royal divorces had happened before: Louis IX had been granted a divorce in 1499, and in 1528 James IV's widow Margaret (Henry's sister) had also been granted one. However, a previous Pope had specifically granted Henry a license to marry his brother's widow in 1509.

Henry's second marriage had raised hopes for a male heir. Anne Boleyn, however, produced another daughter, Princess Elizabeth, and failed to produce a male child. Henry got rid of Anne on charges of treason which were almost certainly false, and she was executed in 1536. In 1537 her replacement, Henry's third wife Jane Seymour, finally bore him a son, who was later to become Edward VI. Jane died in childbed, 12 days after the birth in 1537.

Henry had two more marriages, to Katherine Howard (executed on grounds of adultery in 1542) and Catherine Parr (who survived Henry to die in 1548). None produced any children. Henry made sure that his sole male heir, Edward, was educated by people who believed in Protestantism rather than Catholicism because he wanted the anti-papal nature of his reformation and his dynasty to become more firmly established.

August Gemstone: *Periodot*
August Flower: *Gladiolus*

It is always good to be a leader!
But be a follower! Find us on Instagram
Spellman_Stamp_Museum

Do You Know Our Accession Partner?

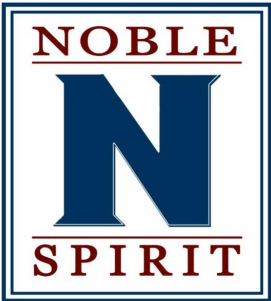
We partner with NobleSpirit, a firm specializing in rare stamps, coins, paper money, books, antiques, and collectibles.
NobleSpirit is our 2023 Events sponsor and a trusted and reliable resource.



**we are a fun
stamp museum!**



**we are open thursdays,
fridays and saturdays
during the summer.
love our newsletter? share
it with a friend!**



Specializing in stamps,
antiques, books, and
collectibles.

The Spellman
Museum of Stamps
and Postal History
Official Events Sponsor



Power of culture

*Spellman
educational programs are supported in part by a
grant from the Weston Cultural Council, a local
agency which is supported by the Mass Cultural
Council. The Spellman is grateful for all forms of
support, both financial and via collections.*

**WHY STAMPS?
WHY THE SPELLMAN?**

ITS EASY – WE ARE FUN!
STAMPS ARE TINY PIECES OF BEAUTIFUL ARTWORK THAT
ENGAGE AND INSPIRE SO MANY PEOPLE.

WE ARE FASCINATED BY THE PLEASURE THESE TINY ADHESIVES PROVIDE TO
COLLECTORS OF ALL AGES.

WHAT IS YOUR FAVORITE STAMPS AND WHY?
SEND US A NOTE AND LET US KNOW – WE WANT TO TELL YOUR STORY!

**Let's Pause for a Little Spellman Housekeeping -
Museum Volunteers Needed!
Enjoy 20% Discount on All Museum Purchases**
We like to have fun with our newsletter so thanks for reading this bit of information

we are eager to welcome new volunteers to our on site efforts at the Spellman.
Are you interested and available to help us? Work alongside our Curator!
If you are knowledgeable about and interested in the following, please contact us to set up
a time to discuss volunteering:

Worldwide Postal Stationary, Ship cancels, Railway POs
Highway POs, Worldwide and US used postal stationary and postal history including auxiliary
markings, DPOs, errors and earliest use dates.
Postcards as postcards not just postal history.
Worldwide fiscal stamps and perfin
Topical collections: maps, music, scouts. olympics, women,
space, medicine, black history.
Israeli collections



LET'S KEEP IN TOUCH!

The Spellman Museum is a treasured resource, locally and nationally, and beyond!

As a 501(c)3 support-driven entity, we appreciate all forms of support.

If you have a collection to be evaluated, feel free to call or [email Joseph Mullin](#), Public Affairs Director, to arrange the visit. He can be reached at 781-768-8367.

If you'd like to support the museum with a donation, please visit spellmanmuseum.org

If you'd like to visit the Museum, simply stop by Thursdays - Sundays, noon - 5pm. Or, feel free to call to schedule a private tour.

**We joyfully welcome all!
Plus we are really fun!**

781-768-8367

YOUTH AND SENIOR MEMBERSHIPS ARE MORE AND MORE POPULAR!

The Museum continues to offer a complimentary, one-year membership for children. Youth members receive a monthly packet of topical stamps, worksheets and philatelic information, a discount in the Museum store, a monthly stamp calendar plus free admission for themselves and the family. For more information, contact [Jessica Leuschner](#).

Our seniors are a treasured segment of our membership. Established last year, this \$25 membership offers those individuals all of the benefits and joys of membership. Contact us for more information!

Have ideas? Want to share?
Please send us any and all ideas!

Spellman Museum of Stamps and Postal History | 241 Wellesley St, Weston, MA 02493

[Unsubscribe bhoward@spellmanmuseum.org](#)

[Update Profile](#) | [Constant Contact Data Notice](#)

Sent byjlchase@spellmanmuseum.orgpowered by



Try email marketing for free today!